

CARES Summary Report

Demographic and Survival Characteristics of OHCA

Non-Traumatic Etiology | Arrest Witness Status: All | Date of Arrest: 01/01/21-12/31/21

Data	NCTTRAC N=3117	State (All Agencies) N=9896	National N=138782
Age	N=3117	N=9896	N=138735
Mean	62.8	62.2	61.9
Median	65.0	65.0	64.0
Gender (%)	N=3117	N=9896	N=138750
Female	1217 (39.0)	3863 (39.0)	52125 (37.6)
Male	1899 (60.9)	6030 (60.9)	86591 (62.4)
Race (%)	N=3117	N=9896	N=138649
American-Indian/Alaskan	6 (0.2)	12 (0.1)	503 (0.4)
Asian	100 (3.2)	244 (2.5)	3495 (2.5)
Black/African-American	612 (19.6)	2155 (21.8)	31132 (22.5)
Hispanic/Latino	426 (13.7)	2412 (24.4)	11937 (8.6)
Native Hawaiian/Pacific Islander	11 (0.4)	19 (0.2)	743 (0.5)
White	1731 (55.5)	4719 (47.7)	69610 (50.2)
Multi-racial	6 (0.2)	24 (0.2)	480 (0.3)
Unknown	225 (7.2)	311 (3.1)	20749 (15.0)
Location of Arrest (%)	N=3117	N=9896	N=138745
Home/Residence	2219 (71.2)	7046 (71.2)	101980 (73.5)
Nursing Home	447 (14.3)	1244 (12.6)	14058 (10.1)
Public Setting	451 (14.5)	1606 (16.2)	22707 (16.4)
Arrest witnessed (%)	N=3116	N=9890	N=138737
Bystander Witnessed	1145 (36.7)	3755 (38.0)	51968 (37.5)
Witnessed by 911 Responder	392 (12.6)	1372 (13.9)	16982 (12.2)
Unwitnessed	1579 (50.7)	4763 (48.2)	69787 (50.3)
Who Initiated CPR? (%)	N=3117	N=9896	N=138588
Not Applicable	9 (0.3)	23 (0.2)	139 (0.1)
Bystander	1330 (42.7)	4295 (43.4)	56182 (40.5)
First Responder	821 (26.3)	2877 (29.1)	42414 (30.6)
Emergency Medical Services (EMS)	957 (30.7)	2701 (27.3)	39853 (28.8)
Was an AED applied prior to EMS arrival? (%)	N=3117	N=9895	N=138763
Yes	641 (20.6)	3227 (32.6)	39206 (28.3)
No	2476 (79.4)	6668 (67.4)	99557 (71.7)
Who first applied automated external defibrillator? (%)	N=629	N=3196	N=39083
Bystander	260 (41.3)	849 (26.6)	8139 (20.8)
First Responder	369 (58.7)	2347 (73.4)	30944 (79.2)
Who first defibrillated the patient?* (%)	N=3116	N=9895	N=137499
Not Applicable	2257 (72.4)	7056 (71.3)	98052 (71.3)
Bystander	44 (1.4)	177 (1.8)	1845 (1.3)
First Responder	103 (3.3)	467 (4.7)	7581 (5.5)
Responding EMS Personnel	712 (22.8)	2195 (22.2)	30021 (21.8)
First Arrest Rhythm (%)	N=3103	N=9859	N=138593
Vfib/Vtach/Unknown Shockable Rhythm	482 (15.5)	1504 (15.3)	22591 (16.3)
Asystole	1824 (58.8)	5311 (53.9)	74090 (53.5)
Idioventricular/PEA	712 (22.9)	2701 (27.4)	30932 (22.3)
Unknown Unshockable Rhythm	85 (2.7)	343 (3.5)	10980 (7.9)
Sustained ROSC (%)	N=3111	N=9844	N=137902
Yes	746 (24.0)	2421 (24.6)	37078 (26.9)
No	2365 (76.0)	7423 (75.4)	100824 (73.1)
Was hypothermia care provided in the field? (%)	N=3117	N=9896	N=138580
Yes	16 (0.5)	118 (1.2)	4137 (3.0)
No	3101 (99.5)	9778 (98.8)	134443 (97.0)
Pre-hospital Outcome (%)	N=3117	N=9896	N=138782
Pronounced in the Field	1049 (33.7)	4100 (41.4)	58339 (42.0)
Pronounced in ED	565 (18.1)	1563 (15.8)	13816 (10.0)
Ongoing Resuscitation in ED	1503 (48.2)	4233 (42.8)	66627 (48.0)
Overall Survival (%)	N=3117	N=9896	N=138782
Overall Survival to Hospital Admission	635 (20.4)	2008 (20.3)	28553 (20.6)
Overall Survival to Hospital Discharge	260 (8.3)	776 (7.8)	10317 (7.4)
With Good or Moderate Cerebral Performance	194 (6.2)	576 (5.8)	8033 (5.8)
Missing hospital outcome	209	638	11599
Utstein¹ Survival (%)	N=276	N=881	N=13376
	29.3%	25.7%	23.3%
Utstein Bystander² Survival (%)	N=172	N=557	N=7802
	32.0%	27.5%	26.2%

Inclusion criteria: An out-of-hospital cardiac arrest where resuscitation is attempted by a 911 responder (CPR and/or defibrillation). This would also include patients that received an AED shock by a bystander prior to the arrival of 911 responders.

**This is a new question that was introduced on the 2011 form.*

¹Witnessed by bystander and found in a shockable rhythm

²Witnessed by bystander, found in shockable rhythm, and received some bystander intervention (CPR by bystander and/or AED applied by bystander)

CARES Survival Report

Agency Group: NCTTRAC | Date of Arrest: 01/01/21-12/31/21 | Non-Traumatic Etiology

	OVERALL N = 2908				
	Total N (%)	Sustained ROSC (%)	Survival to hospital admission (%)	Survival to hospital discharge (%)	Survival to discharge with CPC 1 or 2 [†] (%)
Total	2908	647 (22.2)	627 (21.6)	260 (8.9)	194 (6.7)
Location of Arrest					
Home/Residence	2063 (70.9)	449 (21.8)	433 (21.0)	163 (7.9)	117 (5.7)
Nursing Home	431 (14.8)	63 (14.6)	40 (9.3)	10 (2.3)	5 (1.2)
Public Setting	414 (14.2)	135 (32.6)	154 (37.2)	87 (21.0)	72 (17.4)
Arrest Witnessed Status					
Unwitnessed	1502 (51.7)	206 (13.7)	186 (12.4)	58 (3.9)	39 (2.6)
Bystander witnessed	1057 (36.3)	307 (29.0)	305 (28.9)	139 (13.2)	105 (9.9)
911 Responder witnessed	349 (12.0)	134 (38.4)	136 (39.0)	63 (18.1)	50 (14.3)
Bystander CPR*					
Bystander CPR	1246 (48.7)	270 (21.7)	264 (21.2)	114 (9.1)	83 (6.7)
No Bystander CPR	1313 (51.3)	243 (18.5)	227 (17.3)	83 (6.3)	61 (4.6)
Bystander CPR (excludes nursing home/healthcare facility events)	851 (41.4)	199 (23.4)	211 (24.8)	101 (11.9)	75 (8.8)
No Bystander CPR (excludes nursing home/healthcare facility events)	1206 (58.6)	229 (19.0)	220 (18.2)	79 (6.6)	60 (5.0)
Initial Arrest Rhythm					
Shockable	421 (14.5)	174 (41.3)	191 (45.4)	127 (30.2)	108 (25.7)
Non-shockable	2475 (85.5)	466 (18.8)	428 (17.3)	125 (5.1)	78 (3.2)
AED Use					
Bystander AED use*	249 (9.7)	51 (20.5)	46 (18.5)	16 (6.4)	13 (5.2)
Bystander AED use* (excludes nursing home/healthcare facility events)	32 (1.6)	12 (37.5)	14 (43.8)	9 (28.1)	9 (28.1)
Trained provider (First Responder) AED use	343 (11.8)	68 (19.8)	66 (19.2)	29 (8.5)	20 (5.8)
Utstein					
Witnessed and shockable	294 (10.1)	136 (46.3)	154 (52.4)	107 (36.4)	93 (31.6)
Bystander witnessed and shockable	240 (8.3)	103 (42.9)	118 (49.2)	81 (33.8)	69 (28.7)
Hypothermia					
Field hypothermia	15 (0.5)	11 (73.3)	11 (73.3)	1 (6.7)	1 (6.7)
In-hospital hypothermia/TTM (among admitted patients)	231 (36.8)	--	--	90 (39.0)	53 (22.9)

Inclusion Criteria: An out-of-hospital cardiac arrest where resuscitation is attempted by a 911 responder (CPR and/or defibrillation). This would also include patients that received an AED shock by a bystander prior to the arrival of 911 responders.

NOTE: Analysis excludes patients with missing hospital outcome (N=209).

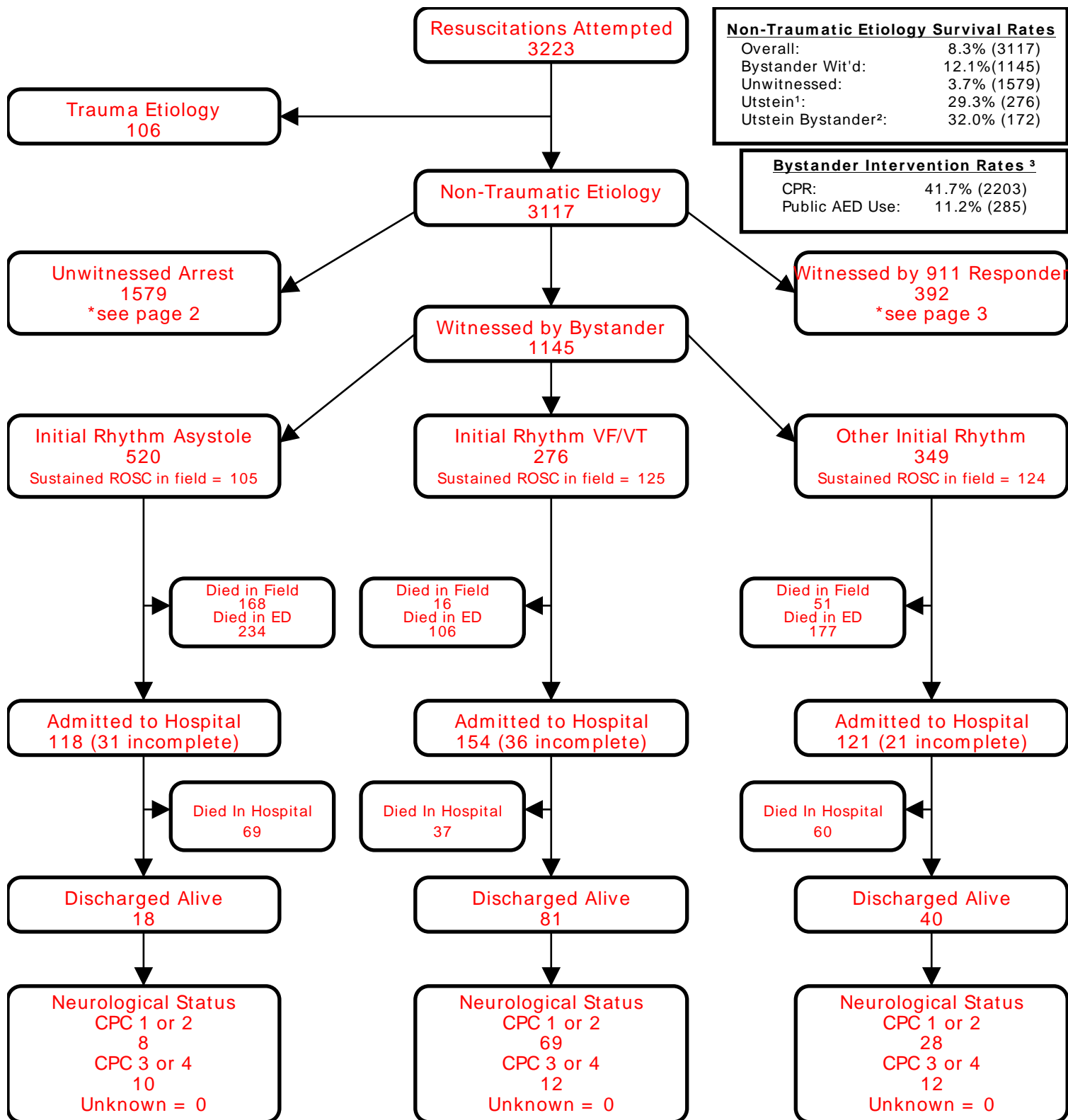
*Bystander CPR and bystander AED use calculations exclude 911 Responder witnessed events.

[†]CPC missing for 0 patients.

Utstein Survival Report

All Agencies

Agency Group: NCTTRAC | Date of Arrest: 01/01/21-12/31/21



Non-Traumatic Etiology Survival Rates	
Overall:	8.3% (3117)
Bystander Wit'd:	12.1% (1145)
Unwitnessed:	3.7% (1579)
Utstein ¹ :	29.3% (276)
Utstein Bystander ² :	32.0% (172)

Bystander Intervention Rates ³	
CPR:	41.7% (2203)
Public AED Use:	11.2% (285)

¹Utstein: Witnessed by bystander and found in shockable rhythm.

²Utstein Bystander: Witnessed by bystander, found in shockable rhythm, and received some bystander intervention (CPR and/or AED application).

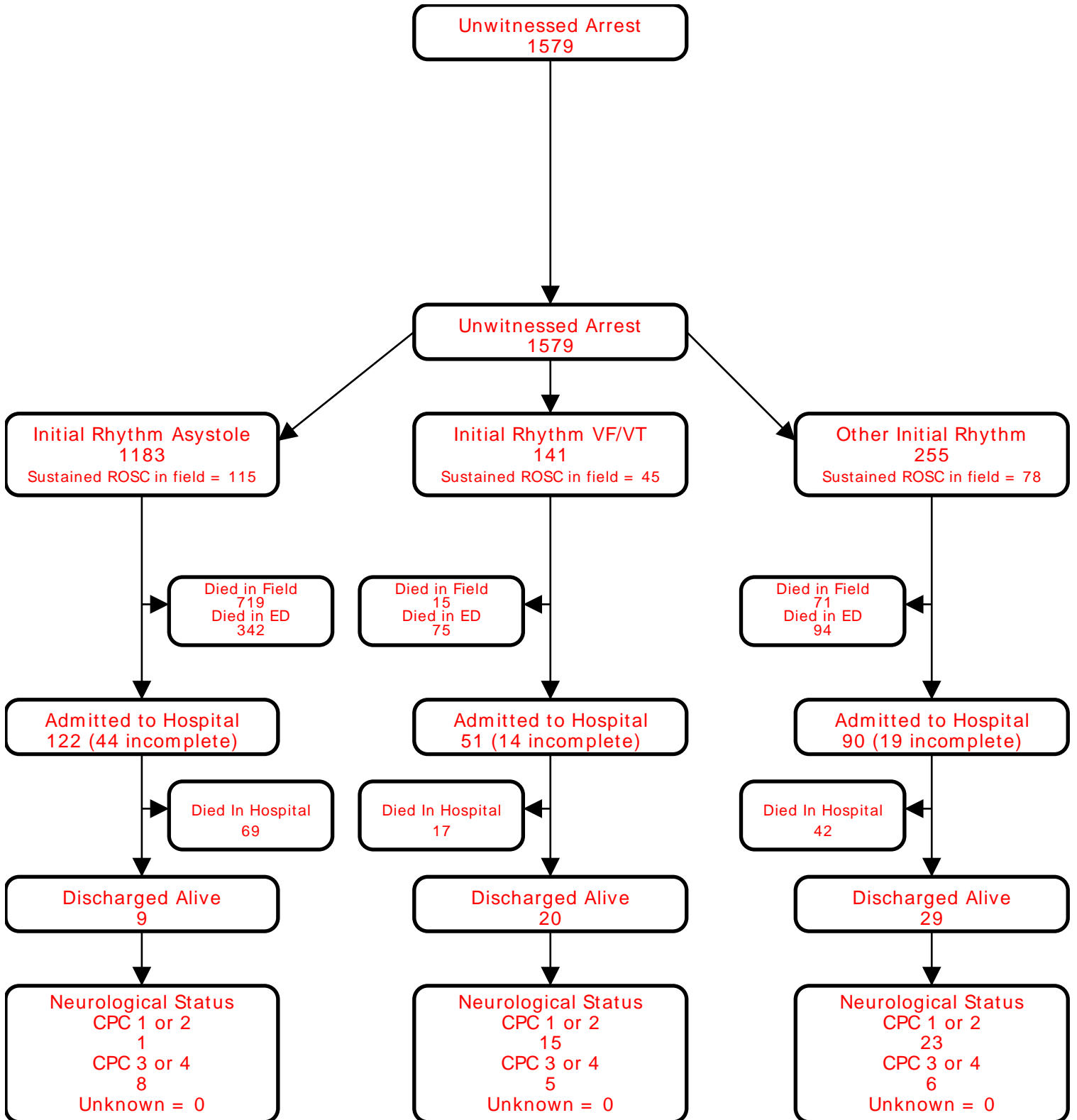
³Bystander CPR rate excludes 911 Responder Witnessed, Nursing Home, and Healthcare Facility arrests. Public AED Use rate excludes 911 Responder Witnessed, Home/Residence, Nursing Home, and Healthcare Facility arrests.

*Only data from the previous calendar year is fully audited. Data from the current calendar year is dynamic.

Utstein Survival Report

All Agencies

Agency Group: NCTTRAC | Date of Arrest: 01/01/21-12/31/21



Utstein Survival Report

All Agencies

Agency Group: NCTTRAC | Date of Arrest: 01/01/21-12/31/21

