



General Membership Meeting

October 11, 2016

- Continuing Education Thanks
 - Grant Cottingham, Texas Municipal Police Association
 - R. Dudley Wilcoxson, Methodist Charlton Medical Center
- Hope You Enjoyed Networking Time & Lunch!
- Today's Agenda Highlights
 - Special Recognition of Individual & Community Leadership
 - Final Member Voting on Bylaws Updates & Regional Plans
 - Handouts: Financials, Ballots, DFWHC, Tour Invites, & Golf !
 - "Flash" Versions of OnTRAC Now Going Out Monthly
- Pager/Cell Phone/Radio Courtesies Please
- Microphones, Recording & Remote via WebEx
- Restrooms & Emergency Exits

Chair's Recognition & Reports

- Transitions
- Heart Safe Communities
- FY17 Planning & Budgeting
- Vice Chair's Annual Bylaws Review



Texas HEART Safe Community Program

Sponsored by the North Central Texas
Trauma Regional Advisory Council

Background

John Glover

Karen Yates

Stephanie Koepke

Angela Perreault

Dr. Alan Taylor

Debbie Travis

Tracie Inglis

Kevin Sandifer

Special Thanks to Melissa Christon,
Jim Dickerson and the NCTTRAC BoD



All about Community and Partnerships

- ▶ Comprehensive Program
 - Education Programs/Prevention
 - Healthy Lifestyles
 - CPR/AED Education/Heart Disease
 - Promotion of Physical Fitness/Healthy Choices
 - Parks and Trail systems/Smoking cessation
 - Healthy Nutritional Options
 - Early Access
 - 911/AEDs/EMD
 - Healthcare Provider Response/Relationships
 - Data Collection/Analysis

Recognition Process

Recognition Letter & Certificate

Stay Safe Traffic Products C182483EWT151A2
Order# 14667788 PO# 12242

WIDTH: 18"
HEIGHT: 24"
THICKNESS: .080

FINISH: EGP
COLOR: WHITE
OF SIDES FINISHED: 1
RADIUS: 1 1/2"
HOLE PLACEMENT: TB CENTER(2)
HOLE DIAMETER: 3/8"
HOLE INSET: 3"

MFG NOTES:
COPY COLOR1: RED
COPY COLOR2: BLACK
DIGITALLY PRINTED LOGO
BACKGROUND: WHITE
3/8" MARGIN, 3/8" BORDER

24"

18"

1.92"

3"

1.98"

0.75"

1.75"

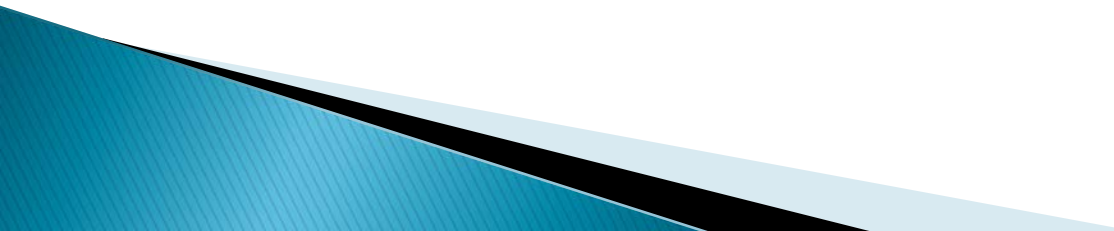
0.3"

HEART Safe

Community

Recognized By
NCT+RAC
NORTH CENTRAL TEXAS
TRAUMA REGIONAL ADVISORY COUNCIL

Interested?

- ▶ Further information will be made available on the NCTTRAC.ORG/Cardiac committee webpage.
 - ▶ <http://www.ncttrac.org/Committees/Cardiac.aspx>
 - ▶ Email Inquiries to: heartsafe@ncttrac.org
- 

Beta Sites

City of Arlington

City of Highland Village

City of Mansfield

City of Bedford

FY17 Planning & Budgeting Session - July 27, 2016

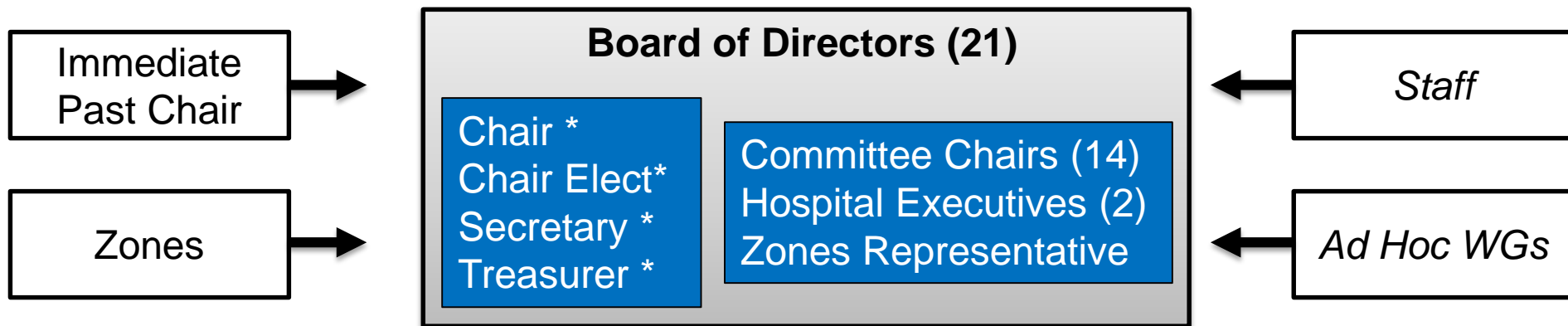
- FY16 Contracts / Unrestricted Programs Review
 - Members' Perspective: "Where did my Dues Go?"
- FY17 RAC Member Annual Needs Assessment
- FY17 Revenue Horizon
 - State Contracts & Deliverables
- FY17 Budget Centers & Activities
 - Education & Professional Development
 - REG*E / E*TRACs Stand Down and Alternatives
 - EHS Programs Expansion
 - EMS Conference
- Draft FY17 Budgets & Recommended Options
- Goals Process Evolution – 2008 to Present
 - Committee SOPs as Annual "Game Plans"
 - Accountability Scorecard: BoD Self-Assessment
- Discussion Topics
 - Bylaws Revisions Review (To Date)
 - NCTTRAC Membership Participation Recommendations
 - TETAF (Positions on Reorganization & Advocacy)
- Open Forum and Discussion

Proposed Bylaws Changes

Vice Chair Jorie Klein

- Establish Executive Committee of the Board of Directors
 - Board Chair, Chair Elect (chg'd from Vice), Secretary, Treasurer
 - Add Finance Chair & Medical Directors Chair
- Increase Physician Involvement
 - Add Medical Directors Committee (replacing PAG)
 - Clinical Committees-elected Medical Directors
- Add 2 Hospital Executives to Board
 - Appointed by DFWHC, representing East TSA & West TSA
- Rolling Calendar Attendance, 50% minimum required
 - Approval of Excused Absences by Executive Committee of BoD
- All Committee Chair Alternates to be Chair Elect with BoD Voting Role
- Decision Flowchart for Clinical & Medical Directors Committees
- Add Perinatal as Standing Committee and “Acute” to Mission
- Identify Core Groups in All Committees for Vote Accountability

Members



* Executive Committee of the BoD



Air Medical	Cardiac	ED OPS
EMS	Finance*	Medical Directors*
Pediatric	Perinatal	Professional Dev
PE/IP	REPC	Stroke
SPI	Trauma	

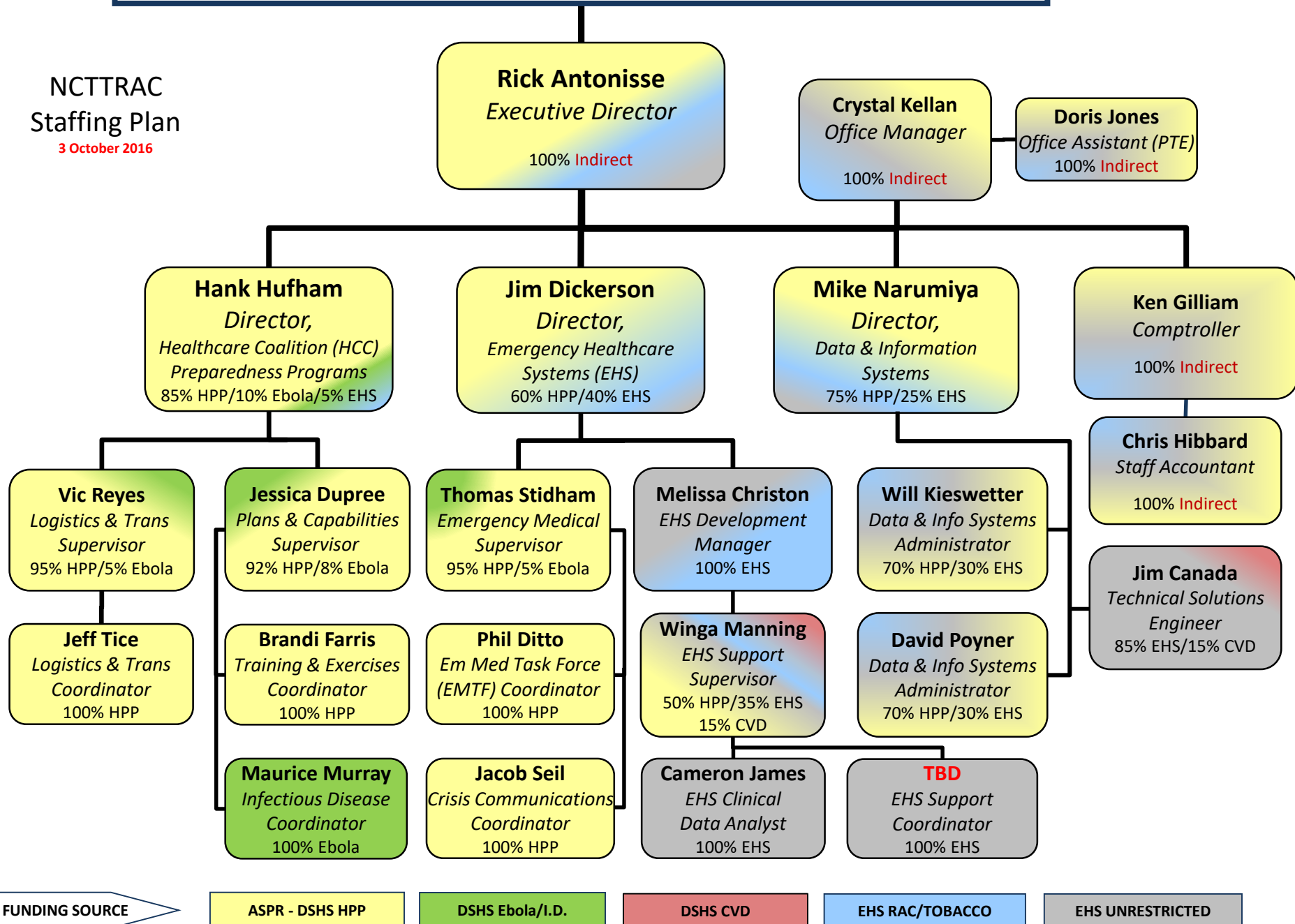
Cardiac	Disaster	ED Ops
EMS - Air	EMS - Ground	Pediatric
Perinatal	Stroke	SPI
Trauma		

Executive Director's Report

- Dallas Ft Worth Hospital Council Update
 - Steve Love, President & CEO
- Final Call for the Vote
 - Bylaws, Membership & Participation SOP, Regional Stroke Plan, Regional ACS Plan
- Patient Data Systems Status
- November EMS Conference (Dallas)
 - Booth & EMTF Commitments
- RAC Staffing Update

NCTTRAC BOARD OFFICERS & DIRECTORS

NCTTRAC
Staffing Plan
3 October 2016



- Treasurer's Report
 - Statement of Activities
 - Balance Sheet
 - FY2015 Audit
- Finance Committee Report
 - FY2017 Revenue Projections
 - FY2017 Budget

Statement of Activities

August 31, 2016

	EMS/RAC	TOBACCO	ASPR HPP YR 15**	EMS/COUNTY ASSISTANCE	ASPR EBOLA YR 2***	CVD	UNRESTRICTE D/DEVELOPM ENT	TOTAL
Revenue								
State of TX - DSHS	\$269,535	\$289,046	\$408,345	\$348,295	\$20,093	\$92,701	\$0	\$1,428,015
Membership Dues	\$0	\$0	\$0	\$0	\$0	\$0	\$444,915	\$444,915
Professional Development Programs	\$0	\$0	\$0	\$0	\$0	\$0	\$17,680	\$17,680
Interest on Investments	\$0	\$0	\$0	\$0	\$0	\$0	\$77	\$77
Sponsorships	\$0	\$0	\$0	\$0	\$0	\$0	\$200	\$200
Total Revenue	\$269,535	\$289,046	\$408,345	\$348,295	\$20,093	\$92,701	\$462,872	\$1,890,887
Expenditures								
Salaries	\$160,373	\$191,319	\$118,766	\$0	\$7,750	\$12,454	\$98,739	\$589,402
Fringe Benefits	\$42,085	\$47,348	\$27,442	\$0	\$1,696	\$3,745	\$13,342	\$135,659
Travel	\$0	\$0	\$5,270	\$0	\$0	\$379	\$23,540	\$29,189
Equipment	\$0	\$0	\$0	\$0	\$0	\$0	\$0	\$0
Supplies	\$0	\$0	\$24,819	\$0	\$0	\$0	\$0	\$24,819
Contractual	\$0	\$0	\$21,030	\$348,295	\$0	\$0	\$0	\$369,325
Other	\$56,198	\$49,378	\$103,467	\$0	\$5,060	\$38,837	\$172,636	\$425,576
Indirect	\$10,879	\$0	\$60,000	\$0	\$4,860	\$189	\$20,053	\$95,981
Unobligated	\$0	\$1,000	\$0	\$0	\$0	\$0	\$0	\$1,000
Total Expenditures	\$269,535	\$289,046	\$360,794	\$348,295	\$19,367	\$55,604	\$328,310	\$1,670,950
Revenues Over (Under) Expenditures	\$0	\$0	\$47,550	\$0	\$726	\$37,097	\$134,563	\$219,937
Beginning Unrestricted Net Assets	\$0	\$0	\$0	\$0	\$0	\$0	\$435,808	\$435,808
Ending Temp Restricted Net Assets	\$0	\$0	\$47,550	\$0	\$726	\$37,097	\$0	\$85,374
Ending Unrestricted Net Assets	\$0	\$0	\$0	\$0	\$0	\$0	\$570,371	\$570,371
Ending Net Assets	\$0	\$0	\$47,550	\$0	\$726	\$37,097	\$570,371	\$655,745

- HPP YR 15 began July 1, 2016 and runs through June 30, 2017
- EBOLA YR 1 began Aug 1, 2015 and runs through June 30, 2016
- TOBACCO contract began 10/1/2015 and runs through 8/31/2016

NCTIRAC: Prepare. Support. Respond.

Balance Sheet

August 31, 2016

	2016	2015
ASSETS		
Current Assets		
Cash	\$1,348,062	\$896,812
Other Current Assets		
Accounts Receivable - DSHS	274,810	458,048
Accounts Receivable - Membership	336,400	371,355
Investments	318,256	118,256
Total Other Current Assets	929,466	947,659
Other Assets		
Security Deposits & Unapplied Cash	8,671	8,671
Prepaid Expense	16,172	
Inventory Held for Distribution	3,319,399	3,319,399
Fixed Assets (net of depreciation)	1,186,828	1,186,828
TOTAL ASSETS	\$6,808,599	\$6,359,369
LIABILITIES & EQUITY		
LIABILITIES		
Current Liabilities		
Accounts Payable	\$160,713	\$93,284
Other Current Liabilities		
ASPR Interest Payable to State	68	14
Payroll Liabilities	122,486	109,044
Deferred Revenue	596,895	513,435
Total Other Current Liabilities	719,450	622,493
Total Liabilities	880,163	715,777
EQUITY		
Unrestricted Net Assets	570,371	435,808
Temporarily Restricted Net Assets	851,838	701,557
Temporarily Restricted Net Assets - Inventory	3,319,399	3,319,399
Temporarily Restricted - Fixed Assets	1,186,828	1,186,828
TOTAL LIABILITIES & EQUITY	\$6,808,599	\$6,359,369

Finance Committee (2016)

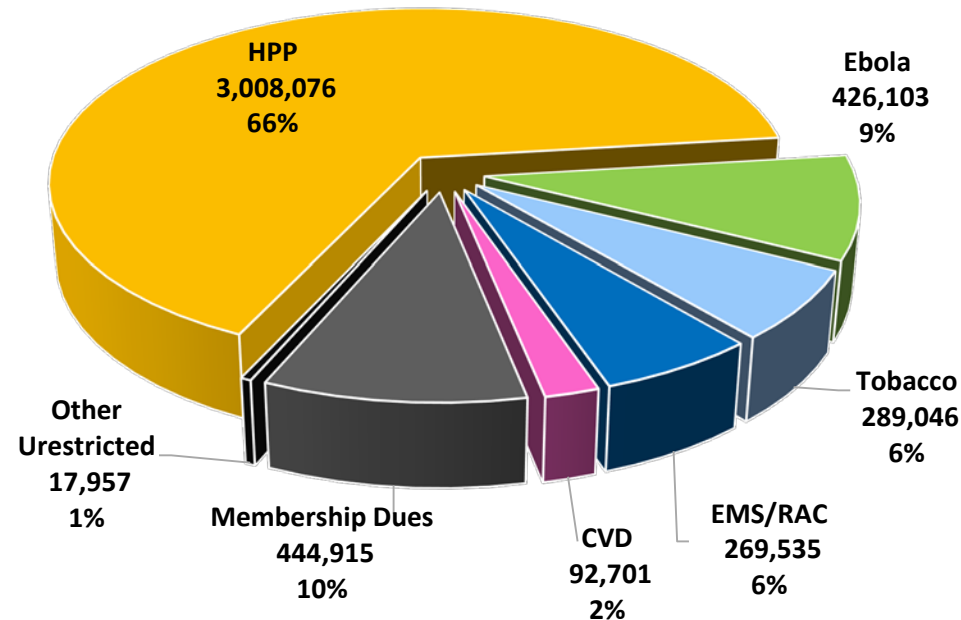
Chair, Christopher Zeringue
COO, Texoma MC

Core Representation: Committee Chair, RAC Vice Chair & Treasurer,
Hospital & EMS System & Peer-Group Appointees

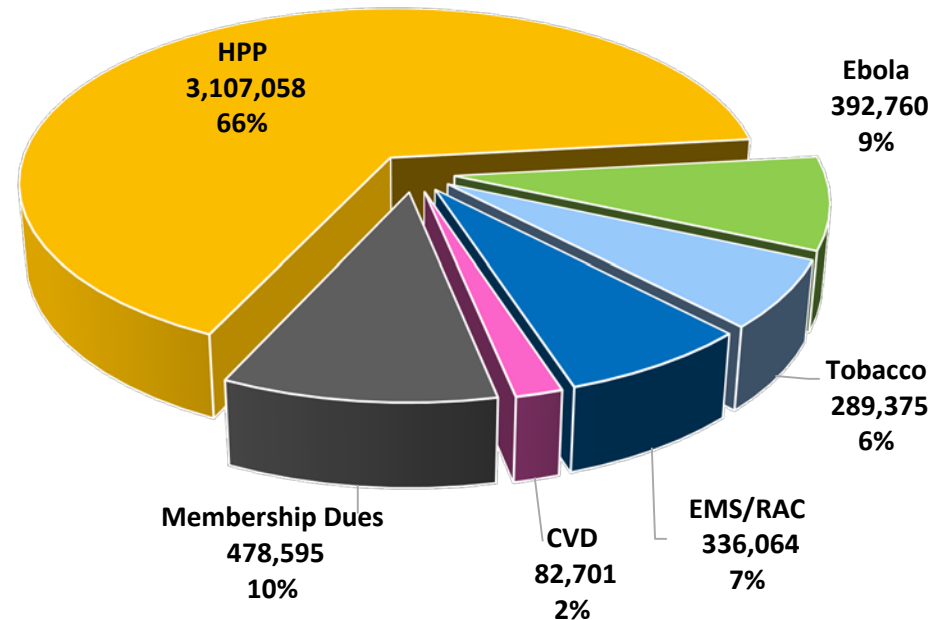
- NCTTRAC Vice Chair
- JPS Hospital District
- Parkland HHS
- Baylor HCS
- HCA
- Methodist HS
- Texas Health Resources
- At-Large Hospital
- NCTTRAC Treasurer
- Dallas Co. EMS
- Tarrant Co. EMS
- Collin Co. EMS
- Denton Co. EMS
- At-Large Urban EMS
- At-Large Rural EMS
- Air Medical EMS

FY 2016/2017 Revenue Comparison

FY 16 Year End



FY 17 Projected



* Pass Through Funds not included

FY17 Budget

Consolidated	HPP	Ebola	TOB	RAC	CTY ASST	CVD	UNR	TOTAL
REVENUE								
State of TX DSHS	3,107,058	409,431	289,046	336,064	430,400	82,701		4,654,700
Membership Dues							478,595	478,595
Total Revenue	3,107,058	409,431	289,046	336,064	430,400	82,701	478,595	5,133,295
EXPENSES								
Salaries	811,835	86,407	153,411	164,563		20,000	136,324	1,372,540
Fringe Benefits	235,432	25,058	44,489	47,723		5,800	39,534	398,036
Travel	30,618	6,273	0	0		857	27,500	65,248
Supplies	140,500	62,779	1,000	1,000		171	1,000	206,450
Contractual	754,180	70,000	0	0	430,400	0	0	1,254,580
Other Services & Charges	768,122	115,203	35,646	70,912		55,343	173,147	1,218,373
Indirect	366,371	43,711	44,500	51,865		7,029	65,519	578,996
Unobligated for Future Projects			10,000					10,000
Total Expenses	3,107,058	409,431	289,046	336,064	430,400	89,201	443,024	5,104,224
NET INCOME/LOSS	0	0	0	0	0	(6,500)	35,571	29,071

Direct FTE Supported	10.79	1.29	1.73	2.05	0.00	0.27	1.87	18.00
Indirect FTE Supported	2.86	0.34	0.38	0.45	0.00	0.08	0.41	4.50
Total FTE Supported	13.65	1.63	2.10	2.50	0.00	0.35	2.27	22.50

- Emergency Preparedness Regulations for Hospitals
 - 42 CFR §482.15
 - Information released 8 Sep 2016
 - Law becomes effective 16 Nov 2017
 - Published in Federal Register of 16 Sep 2016 with interpretations
- Crosswalk handout of CMS, Texas hospital licensure, Joint Commission, and HPP program goals, objectives, and requirements

2017 Hospital Preparedness Program Continuation

- Received Pre-Decisional Draft of HPP Performance Measures
 - **Goal:** Develop and implement strategies to deliver *acute medical care* to all populations during emergencies, provide uninterrupted care in the face of damaged or disabled health care infrastructure, surging when service demands exceed available supply
 - Merges current eight capabilities into four concentration areas
 - Capability 1: Foundation for Health Care and Medical Readiness
 - Capability 2: Health Care and Medical Response and Recovery Coordination
 - Capability 3: Continuity of Health Care Service Delivery
 - Capability 4: Medical Surge
- Integrates CMS, DSHS, TJC, and HPP requirements
- **FOCUS:** Continuity of operations, low / no notice exercises, access and functional needs planning

Ebola Preparedness & Response Program (EPRP)

- **Ebola / HCID Full Scale Exercise**
 - August 30 and 31, 2016
 - Medical Center Lewisville, Lewisville Fire and EMS, Denton and Dallas County Public Health, UTSW William P. Clements Hospital, Dallas Love Field Airport and PD, DSHS Region 2/3
 - DSHS Austin and state legislature staff observers
- **Upcoming activities:**
 - State debriefing in Austin 25 October (HPP/PHEP meeting)
 - Continuing RETA agency drills and training
 - ConOps statewide merger commencing
 - Free Standing ER notification of TSA-E HCID ConOps

Emergency Medical Response Resources

- Warehouse tours
- Target audience:
 - C-suite
 - Emergency Management
 - Fire and EMS Chiefs
 - Committee Chairs
 - Membership
- Wednesdays, by appointment



NORTH CENTRAL TEXAS
TRAUMA REGIONAL ADVISORY COUNCIL

Emergency Medical Warehouse Tours

NCTTRAC invites you to tour our Emergency Medical Warehouse.

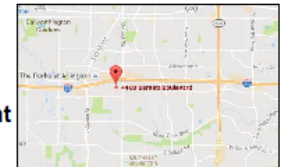
Come learn about regional emergency medical support and assets that may be requested during health and medical disasters!

Where: 4408 Barnett Boulevard
Arlington, TX 76017

How long: Approximately 30 minutes

When: On Wednesdays, by appointment

Call: (817) 607-7002



Emergency Medical Task Force (EMTF-2)

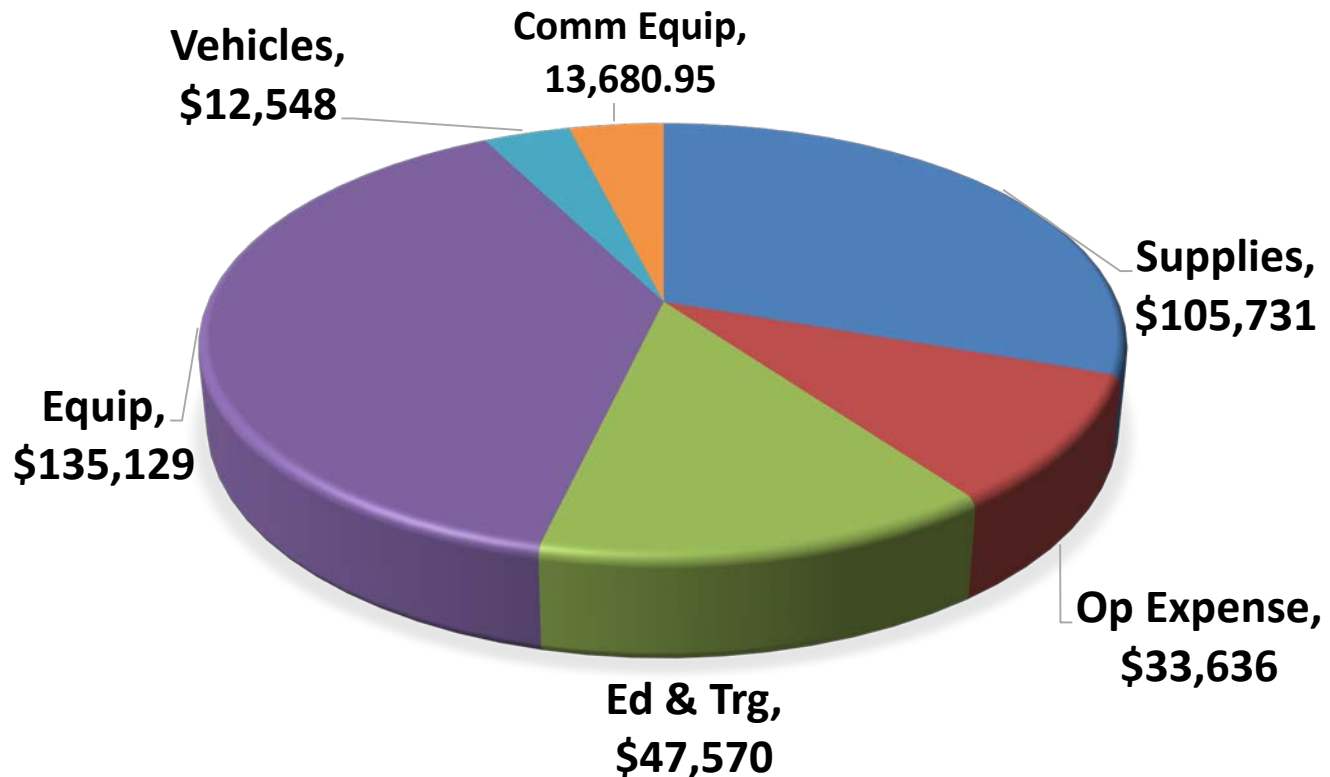
- 32-bed Mobile Medical Unit
- Discuss Ambulance Strike Teams, Ambulance Buses, Nurse Strike Teams, Medical Incident Support Teams

Understand available regional assets

- Communications equipment
- Radiation detection equipment
- Emergency lighting
- Triage tag systems and Pedi-Mates
- High Consequence Infectious Disease protective equipment
- Evacuation equipment and emergency bedding
- Decontamination and personal protective equipment
- Mass fatality supplies and trailer
- Durable medical equipment – ventilators, suction units, and defibrillators

FY16 EMS County Assistance “Pass-Through” Utilization

FY 2015/16 EMS PASS-THRU
UTILIZATION BY EXPENDITURE TYPE



**Eligible
Expenditures**

Supplies
Ops Expense
Educ & Trng
Equip
Vehicle
Comm Equip

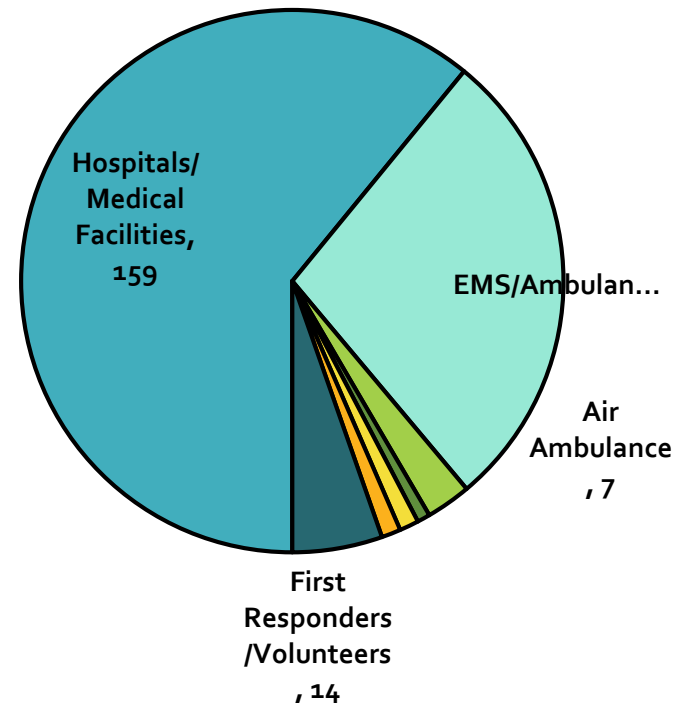
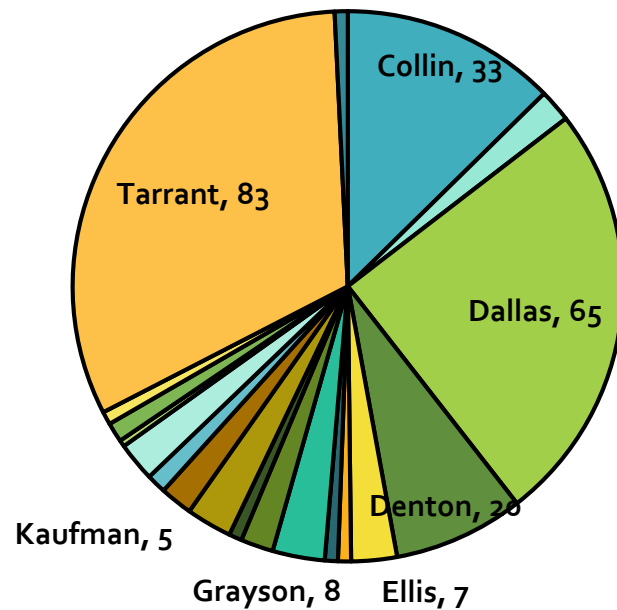
TSA E Allotment: \$348,295
Total Number of Agencies: 77*

YTD Reimbursement: \$348,295
YTD Number of Agencies: 76*

Emergency Healthcare Systems Support (Acute Care)

2016 Needs Assessment Survey

- Conducted in June with 261 total respondents
- Results Available at www.ncttrac.org



Emergency Healthcare Systems Support (Acute Care)

- Texas Heart Disease and Stroke Program (CVD)
 - 83 Facilities eligible to participate, 49 currently participating (email wmanning@ncttrac.org for information on participation)
- 2016 Local Projects Grant
 - Purchased Carbon Monoxide Detectors for every ambulance in TSA-E
 - Notification to be sent to EMS providers by end of October



TEXAS HEART DISEASE
AND STROKE PROGRAM



- NCTTRAC Notifications

- EMTF-2 Confirmation Rate: 84.3 %
- NCTTRAC Staff Confirmation Rate: 98.3%



- Recently the NCTTRAC EMCC has supported the following real life or training events:

Big X Exercise Planning

BSW ER Incident

POTUS Dallas Visit

DPD Memorial Service

Potential NDMS Evacuation

Medical City of Dallas

Children's Hospital Incident

Bonham Fertilizer Plant

Donald Trump Rally

- New EMTF-2 Partners

- Parkland Memorial Hospital
- American Medical Response



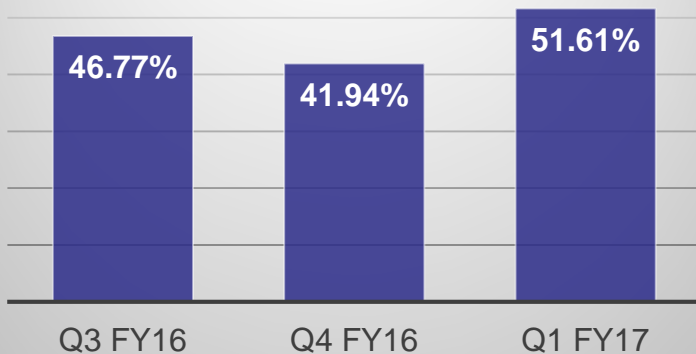
- Waco Staging Deployment
 - Type II MMU; State Mission
 - 2X Medical Incident Support Teams
- Full Scale Exercise
 - 13 Regional Hospitals; 16 Regional EMS Agencies
 - After Action Summaries available at www.NCTTRAC.org
- HHH 2016
 - 35 Deployed MMU Personnel
 - Real Life Training Opportunity
 - HCA, BSW, & Parkland



- **MERC Trailers**
 - Both trailers received updates and upgrades
 - MERC Training Class scheduled for Oct. 27th



Percent of HPP Hospital Participation in Redundant Communications Drills



- **Redundant Communications Drills**
 - Goal of 70% quarterly participation
 - 52% Q1 FY17 (+10% past quarter)
 - Next drill Oct. 28th
 - Contact Jacob Seil @ jseil@ncttrac.org

Visit the education calendar to view or post regional clinical education at www.ncttrac.org/Education

YTD Professional Development Offerings	
	Number of Classes
EMS	12
Nursing	14

On Going/Monthly:

- Stop the Bleed B-Con Train-the-Trainer course
- Trauma Outcomes and Performance Improvement Course (TOPIC)

October:

- Emergency Neurological Life Support (ENLS)

December 1-2:

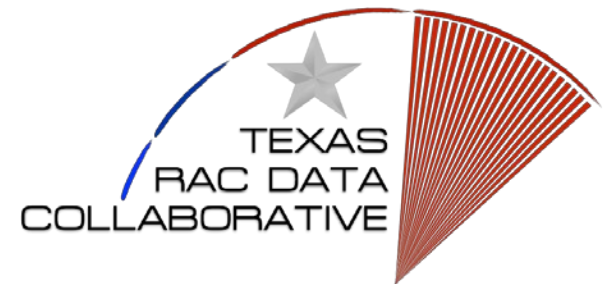
- AAAM Abbreviated Injury Scale (AIS) course

January 9-10:

- Infection Control Officer Training Course

Applications and Compliance

- After review of capabilities, support costs and needs the Board of Directors elected to shutdown both REG*E and E*TRACS.
- Notices were emailed and sent via certified mail.
- The systems were fully shutdown by Sept 1, 2016.
- Still a need for BAAs and RPPAs.
 - RAC Data Collaborative- CVD initiative.
 - Other future potential needs.



Compliance Status

- All data from E*TRACS and REG*E have been cleansed from NCTTTRAC systems.
- All copies that were requested, were fulfilled via Fedex & encrypted dvds.



- Have begun Security Risk Assessment



- New IT Outsourcing company- Technology and Beyond.
 - Additional support to augment our current staff.
 - Better 24/7 coverage, expanded depth of knowledge.



- Website overhaul
 - Amplus Agency, professional overhaul, healthcare experience.



- Focus on WebEOC and EMResource
- AV and IT installs in room 102
 - decommission of room 110
 - Rooms 100 and 150 upgraded completed.
- Removed all Tandberg equipment.



TANDBERG



EHS Committee Reports

- Public Education / Injury Prevention Committee
- Regional Emergency Preparedness Committee
- Stroke Committee
- System Performance Improvement (SPI) Committee
- Trauma Committee
- Air Medical Committee
- Cardiac Committee
- Emergency Department Operations
- EMS Committee
- Pediatric Committee
- Perinatal WG
- Professional Development Committee

- Infusion of safety into committee and making safety a known priority
- Aircraft Utilization
 - Approved by Committee, Awaiting BoD Approval
- Requesting an Aircraft
 - Approved by Committee, Awaiting BoD Approval
- Identifying 2017 Goals
- Establish Air Medical MIST Guidelines

NCTTRAC CARDIAC COMMITTEE

General Membership Meeting
10/11/16



HEART Safe Work Group



- Texas HEART Safe Community Program
- Sponsored by the North Central Texas Trauma Regional Advisory Council
- Arlington, Bedford, Highland Village, and Mansfield have all successfully completed beta testing

Cardiac Committee

- Take 20 for Life Hands Only CPR Kits
- DSHS CVD Initiative
- Pending Education
- Committee is working on revised SOP (pending bylaws revision approval)
 - Goals have been developed for the upcoming year; including professional development, public education, and Heart Safe

- Chair – Kris Powell
- Vice Chair Ray Fowler
- Meets 1st Wed, 12:00–1:00 pm
- Committee Listserv and Website up
 - **GETAC Taskforce on Free-standing EDs and Alternative Care Sites**
 - **Feedback to GETAC taskforce regarding categorization parameters**
 - **EMS Handoff process to EDs**
 - **Reviewing STRAC process and resources (video & handoff form)**
 - **Planning shared meeting with NCTTRAC EMS Committee to move forward with recommendations**

- Committee activities - Parking Lot
 - Regional and Hospital Surge planning and response
 - Consistency in use of EMResource and other tools, processes
 - Flow and care of special populations (e.g. Psych care, Sexual Assault care, nursing home pts)
 - Interfacing with EMS and Community Paramedicine programs
 - ED leader development and resources,
 - Use of data (EMResource and REG*E) to identify and understand operational issues
 - ED boarding and overcrowding
 - Poison Center funding and support
 - Other activities as assigned

EMS COMMITTEE

Activity the last 6 months

Local Projects Grant: Awarded CO Monitors



CO Monitors

- One device will be given to each licensed EMS Ambulance in TSA-E.
- Will include calibration equipment.
- Will need to sign NCTTRAC participation paperwork.
- Potential life saving device for your crew.

Other Committee Activity

- Continue to work with education on the Infection Control class.
- Worked with Stroke on the LAMS scoring system.
- Worked with Cardiac.
- Burn protocol review.
- Multiple updates on the 157.11 rule revisions.
- EMS Time Out.
- BCON (Bleeding Control Course)
- Updates on Pediatric Recognition Program.
- Joint meeting with Cardiac and Stroke.

- **Committee SOP**
 - Approved by Board of Directors August 2016
 - Goal: Facilities will review the pediatric readiness document and compare themselves.
- **Child Fatality Review Team**
- **Snake Bite Protocols**

NCTTRAC Bylaws vote to affirm committee status.

Perinatal Committee Development

- **Structure**

- 54 members in total
- Core group with 22 facility representatives
- Provider levels 1 – 4, Zones and Hospital Systems

- **Leadership**

- Dr. Rashmin Savani, Chair, UTSW
- Dr. Jonathan NedreLOW, Chair-Elect, Cook Children's

- **Participation**

- Requirements defined in Committee SOP

- **Perinatal Work Group Webpage and Listserv**

available at www.ncttrac.org

Last 6 Months Update

- Seeking Vice-Chair
 - Discussing with an interested person
- NCTTRAC Education Calendar (web)
 - Please submit any courses to Melissa Christon to get the course published on the website
- Worked closely with Melissa Christon to provide CE for NCTTRAC members
 - Including today's CE
 - Melissa has an update on all the courses provided in the past 6 months

Injury Prevention/Public Education Focus:

- Orange book review/requirements/documentation
- Coalition work
- Professional workforce development
- Quarterly GETAC updates
- State registry injury reports
- Annual needs assessment
- Identification of MOI and evidence informed initiatives

Injury Prevention/Public Education

- Strategies of program implementation
- Capitol visits/single voice/tools for policy development of injury prevention initiatives
- TETAF communications
- Bylaw work-membership value
- Communication and networking support for injury and violence prevention
- Thank you

Regional Emergency Preparedness Committee

Committee Overview – J.J. Jones Workgroup Activity

Strategic Advisory Group (SAG)

Lead: Resigned

Communications and Crisis Applications

Lead: Rob Monaghan, Baylor, Scott and White

Emergency Medical Task Force

Lead: Jacob Johnson, HCA North Texas

Training and Exercise

Lead: Brian Martin, BSW Medical Center Frisco

Disaster Behavioral Health (DBH)

Lead: Cathy Stout, MHMR Tarrant County

Stroke Committee

- Revised and Updated Stroke Regional Plan to include up to date national and state standards
 - Special thanks to the Stroke Work Group which includes stroke medical directors, EMS, and stroke coordinators
- In collaboration with the EMS Committee, EMS Medical Directors, and Stroke Medical Directors, (Physician Advisory Group) created a EMS Stroke Triage Guideline tool
- Lectures, lunch & learns, and educational offerings to promote stroke awareness
- Submitted to SPI stroke metrics
- Continue to support the state CVD and Stroke project

System Performance Improvement (SPI) Committee

- Regional Data
- Monitor and Evaluate
- Referral Trending and Follow-up
- SPI Performance Indicators
- Regional Communication Center

- Hartford Consensus Project/Stop the Bleed
 - <http://stopthebleedtexas.org/>
- *Resources for Optimal Care of the Injured Patient, 2014* chapter reviews
- Burn patient destination guidelines being reviewed by GETAC workgroup
- Trauma Liaison to PAG named
 - Matthew Carrick, MD., *Medical Center Plano*
- Data submissions to REG*E stopped, any **state** obligations remain

- Future objectives:
 - Hartford Consensus Project/Stop the Bleed
 - RCC/Regional Trauma Transfer Guideline review
 - Workgroup created
 - First meeting November 3, 2016
 - Transmission of radiologic images
 - Trauma System Plan & Committee SOP revisions
 - Data requests from the state registry
 - AAAM/AIS course hosted by NCTTTRAC
December 1-2, 2016

Board of Directors Zones Rep – Martha Headrick

<i>Zone 1</i>	VACANT	
<i>Zone 2</i>	Lisa Ponce	Air-Evac LifeTeam 68
<i>Zone 3</i>	Kathy Humphrey	Air-Evac LifeTeam
<i>Zone 4</i>	Thomas Pritchett	Kerens VFD
<i>Zone 5</i>	Margo Shoemaker	Centennial MC
<i>Zone 6</i>	Martha Headrick	Air-Evac LifeTeam 69
<i>Zone 7</i>	Bobby Sewell	Bedford FD
<i>Zone 8</i>	LuAnn McKee	BioTel/Parkland
	Stephen Bock	Medical City Dallas

General Public Comment

- Next **Board of Directors** Meeting – 10:30 AM, Tuesday, **November 8th, 2016** at the NCTTTRAC Offices, 600 Six Flags Drive, Arlington
- Next **General Membership** Meeting – 1:30 PM, Tuesday, **March (*Final Date TBD*), 2017** at the North Central Texas Council of Governments (NCTCOG), Transportation Council Room, 616 Six Flags Drive, Arlington
- Call to Adjourn