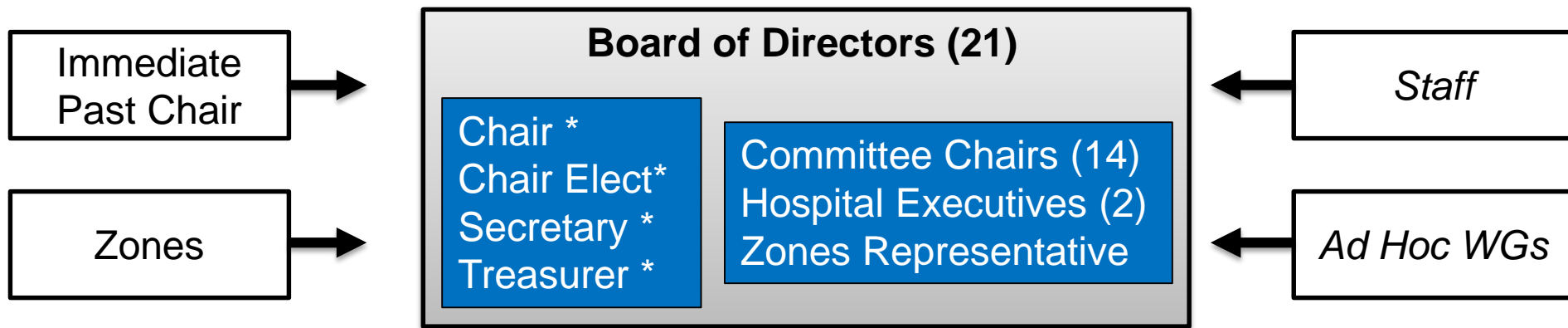


Members



* Executive Committee of the BoD



Air Medical	Cardiac	ED OPS
EMS	Finance*	Medical Directors*
Pediatric	Perinatal	Professional Dev
PE/IP	REPC	Stroke
SPI	Trauma	

Cardiac	Disaster	ED Ops
EMS - Air	EMS - Ground	Pediatric
Perinatal	Stroke	SPI
Trauma		



General Membership Meeting

September 12, 2017

- Continuing Education thanks!
 - Dr. Siavash Siv Eftekhari, Facial & Oral Surgery Associates
 - Scott Lail, Cleburne Fire Department & CareFlite
- Enjoyed networking time & lunch? A few agenda highlights:
 - Handouts: Ballots, Financials, Spring Golf !
 - Special Recognition of Hurricane Harvey Providers
 - Heart Safe Leadership & Communities
 - Board of Directors / Committee Chair Transitions
 - Final Call for the Vote - FY18/19 Board Officers Election
- Pager/Cell Phone/Radio courtesies please
- Remote participation via WebEx – to ensure participation credit e-mail admin@ncttrac.org, Subject: General Membership
- Microphones support audio & recording of the meeting
- Restrooms & Emergency Exits

Acadian - Addison FD - AirEvac - Argyle FD - BSW Irving
BSW Plano - BUMC - Cannefax Consulting - CareFlite
Cedar Hill FD - Celina FD - Citizens EMS - City of Van Alstyne
Cook Childrens Medical Center - Cooke Co. EMS - Coppell FD
DeSoto FD - Farmers Branch FD - Flower Mound FD - Frisco FD
Garland FD - Giatros - Grapevine FD - Hardeman County EMS
Hurst FD - Irving FD - Krum FD - Lancaster FD - Lewisville FD
Little Elm FD - Mansfield FR - McKinney FD - Medical City
Alliance - Medical City Arlington - Medical City Dallas
Medical City Denton - Medical City Healthcare, North Texas
Medical City Las Colinas - Medical City Lewisville
Medical City McKinney - Medical City North Hills
Medical City Plano - MedStar - Mitchell County EMS
Parkland - PCHD Lifecare EMS - Pottsboro FD - Questcare
Richardson FD - Rowlett FR - Sachse FD - Sacred Cross EMS
Sherman FD - Stephenville FD - Stonewall Memorial
Hospital/Stonewall Co. EMS - Sweetwater EMS - Taylor
County EMS - Texas Vital Care EMS - Texoma Medical Center
Trans Care Medical Transport - Wise County EMS - Wylie FR

Chair's Recognition & Reports

- Transitions
- Heart Safe Communities
- Legislative Affairs & Advocacy
- Chair Elect - Annual Bylaws Review

Chair's Recognition & Reports

- **Verne Walker – Interim Finance Chair 2016-2017**
- **Bobby Sewell – Zones Representative 2016-2017**
- **Donald Tucker – Professional Development 2016-2017**
- **Scotti Floyd Edgar – Air Medical 2016-2017**
- **Kristine Powell – Emergency Department Operations 2015-2017**
- **Jeremy Taylor – Trauma 2015-2017**
- **Melinda Weaver – Pediatric 2013-2017**
- **Kevin Cunningham – Emergency Management Services 2012-2017**
- **Dwayne Howerton – System Performance Improvement 2011-2017**
- **Sharon Eberlein – Stroke Committee 2010-2016**
- **Ricky Reeves – Finance Chair, Vice Chair, Chair 2010-2017**



Texas HEART Safe Community City of Cedar Hill

Sponsored by the North Central Texas
Trauma Regional Advisory Council



Texas HEART Safe Community City of Granbury

Sponsored by the North Central Texas
Trauma Regional Advisory Council



Texas HEART Safe Community City of Hutchins

Sponsored by the North Central Texas
Trauma Regional Advisory Council



Texas HEART Safe Community City of Weatherford

Sponsored by the North Central Texas
Trauma Regional Advisory Council

Chair's Recognition & Reports

- ✓ Transitions
- ✓ Heart Safe Communities
- Legislative Affairs & Advocacy
- Chair Elect - Annual Bylaws Review

Executive Director's Report

- Final Call for Votes - Board Officer Elections
- EMS Conference, Nov 19-22 in Fort Worth
 - NCTTRAC Booth & EMTF Commitments
- DSHS (HHSC) Contracts Status
- RAC Staffing Update
- RAC Website Upgrade

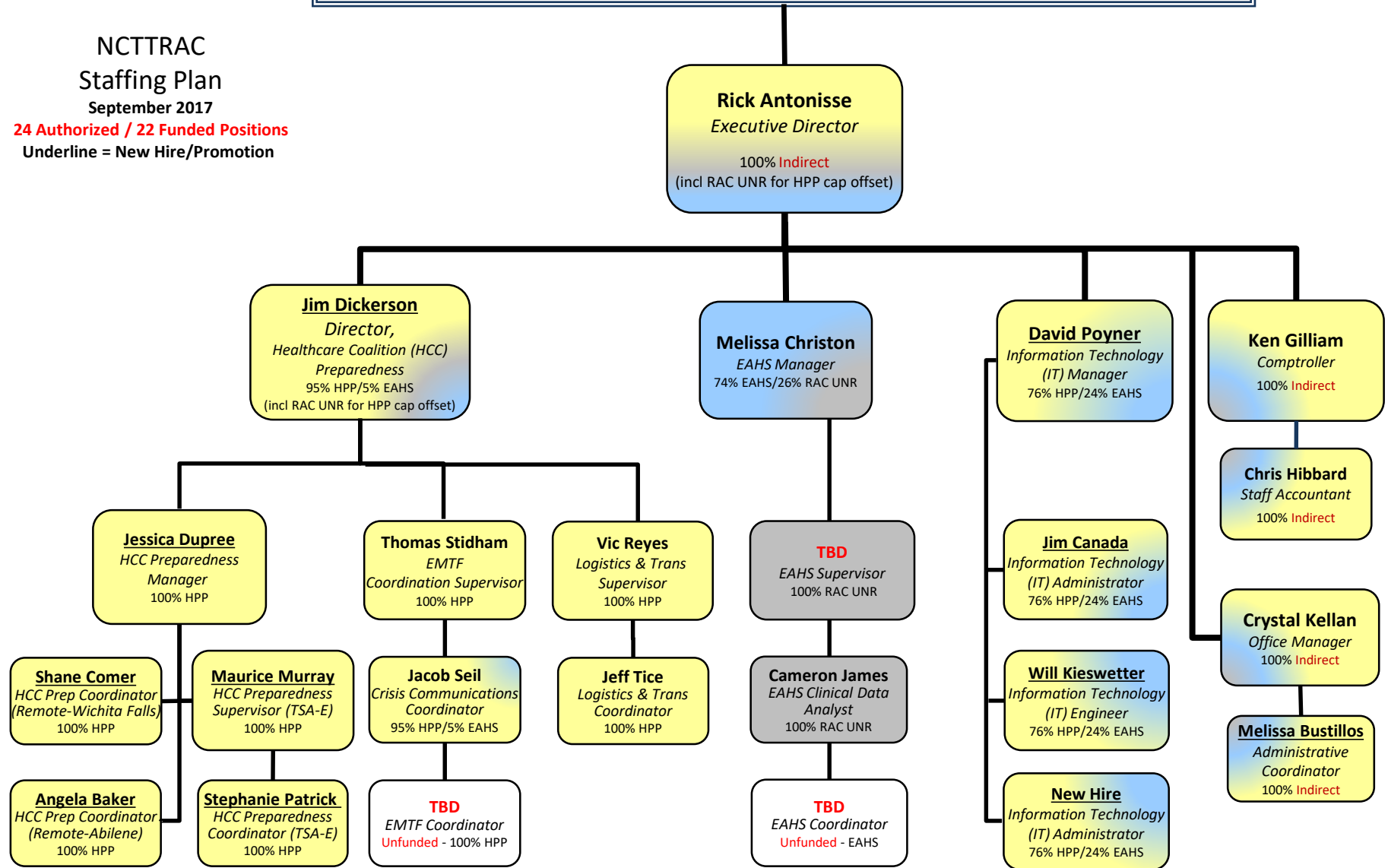
NCTTRAC BOARD OFFICERS & DIRECTORS

NCTTRAC Staffing Plan

September 2017

24 Authorized / 22 Funded Positions

Underline = New Hire/Promotion




New NCTTRAC.org

- Feedback from Members and users been strong and positive
- Interactive content, Member input is important!


Member Driven Website

- Website Issues/Problems – Communicate with Us
- Website - Content Changes, Updates, Suggestions
- Committees and Programs - *your pages, your content*
- **Encourage Registration and Usage**

IT- New Website



NORTH CENTRAL TEXAS
TRAUMA REGIONAL ADVISORY COUNCIL




NCTTRAC
NORTH CENTRAL TEXAS
TRAUMA REGIONAL ADVISORY COUNCIL

We serve
Collin,
Kaufman,
LE...

Search


COMMITTEES:

The North Central Trauma Regional Advisory Council is comprised of several committees that are listed below.




AIR MEDICAL

The Air Medical Committee is responsible for the review of operational and clinical guidelines surrounding air medical transport services in Trauma Service Area (TSA) E.



BOARD OF DIRECTORS

The Board of Directors (formerly Executive Committee) conducts and manages the business and affairs of NCTTRAC, and may exercise all powers of NCTTRAC and do all such lawful acts and things as are not otherwise prohibited by statute or by the Articles of Incorporation of NCTTRAC or by the Bylaws.



CARDIAC

The Cardiac Committee is responsible for the development of an acute cardiac care system for Trauma Services Area (TSA) E. This includes the development of guidelines for rapid transport to appropriate facilities of patients suffering ST Elevation Myocardial Infarction (STEMI), and other acute cardiac conditions.

MARCH, 2017

EVENT LOCATION: ALL EVENT ORGANIZER: ALL ZONES: ALL COMMITTEES: **CARDIAC**

MON	TUE	WED	THU	FRI	SAT	SUN
-	-	1	2	3	4	5
6	7	8	9	10	11	12
13	14	15	16	17	18	19
20	21	22	23	24	25	26
27	28	29	30	31		

1 CARDIAC COMMITTEE MEETING

1 CARDIAC COMMITTEE MEETING

1 STROKE COMMITTEE MEETING

1 AIR MEDICAL COMMITTEE MEETING

1 EMS COMMITTEE MEETING

1 COMBINED-SPS COMMITTEE MEETING

1 TRAUMA COMMITTEE MEETING

SHOW MORE EVENTS

New Ticket

Department *

- Choose One -

- Choose One -
- Change Management - Enhancement Request
- Change Management - Informational
- Change Management - Problem/Break
- Crisis Applications - New Account Request
- Crisis Applications - Support
- DADS Facility Request
- Member - Agendas/Minutes/Documents Upload
- Member - Education Portal Request
- Member - Meeting Request
- Member - SPI Referral Form Request
- NCTTRAC - Administration
- NCTTRAC - Carbon Monoxide Detector Activation Report
- NCTTRAC - DIS Support
- NCTTRAC - Meeting Cancellation
- NCTTRAC - Meeting Request
- Support - Other
- Website - Content Changes/Updates
- Website - Issues/Problems
- Website - New User

IT- Website (more)

AGENDAS

- 2016 06 Agenda
- 2016 06 Agenda
- 2016 07 Agenda
- 2016 08 Agenda
- 2016 09 Agenda
- 2016 11 Agenda
- 2016 12 Agenda
- 2017 01 Agenda


DOCUMENTS

- GETAC November 2015
- GETAC Trauma System February 2016
- GETAC Trauma System Meeting Notes May 2016
- GETAC Trauma Systems Committee Meeting Notes, August 2016
- GETAC Trauma Systems Committee Presentation, August 2016
- Hartford Consensus
- NCTIRAC 2014 Trauma System Plan Effective May 1, 2014

MINUTES

- 2016 05 Notes
- 2016 06 Notes
- 2016 08 Notes
- 2016 09 Notes
- 2016 11 Notes
- 2016 12 Notes
- 2016 12 Notes B
- 2017 01 Notes


OUR LEADERSHIP




RICKY REEVES
CHAIR
EMS Division Chief
Lewisville Fire Department

NOT PICTURED


JORIE KLEIN
CHAIR ELECT
Director of Trauma Program
Portland Memorial Hospital



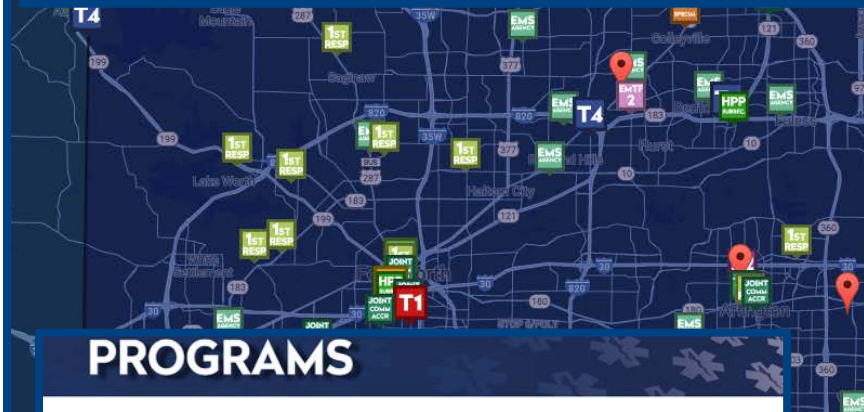
AMY ATNIP
SECRETARY
Director, Trauma Services and EMS
Medical City Plano



DERRICK CUENCA
TREASURER
Chief Executive Office
Low Granbury Medical Center



HENDRIK J. (RICK) ANTONISSE
EXECUTIVE DIRECTOR
NCTIRAC




PROGRAMS




Map data ©2017 Google | Terms of Use


THE NORTH CENTRAL TRAUMA REGIONAL ADVISORY COUNCIL IS COMPRISED OF THREE MAIN PROGRAMS, LISTED BELOW.



HPP
HOSPITAL PREPAREDNESS PROGRAM
[SEE ALL](#)



EHS
EMERGENCY HEALTHCARE SERVICES
[SEE ALL](#)



CMS
CMS PREPAREDNESS
[SEE ALL](#)

CLICK ON A ZONE:



TEXAS

Infrastructure Upgrades

- Replace/Upgrade Projects Underway
- No Disruption to Staff or Services

Other News

- All Meeting Rooms Get New Tech
- Warehouse Security Upgrades
- New Locations in TSA-C and D

- Treasurer's Report
 - Statement of Activities
 - Balance Sheet
- Finance Committee Report
 - New Leadership to assume Chair role
 - Chair Elect Shelly Miland, Texas Health
 - Elections for Chair Elect pending
 - Nominee Bill Bonny, CareFlite

Finance Committee (FY18)

Chair, Shelley Miland
VP Finance, Texas Health Arlington Memorial

Core Representation: Committee Chair, RAC Vice Chair & Treasurer,
Hospital & EMS System & Peer-Group Appointees

- NCTTRAC Vice Chair
- JPS Hospital District
- Parkland HHS
- Baylor HCS
- HCA
- Methodist HS
- Texas Health Resources
- At-Large Hospital
- NCTTRAC Treasurer
- Dallas Co. EMS
- Tarrant Co. EMS
- Collin Co. EMS
- Denton Co. EMS
- At-Large Urban EMS
- At-Large Rural EMS
- Air Medical EMS

Statement of Activities

HPP/EBOLA DETAIL

July 31, 2017

	HPP TSA-C YR 16*	HPP TSA-D YR 16*	HPP TSA-E YR 16*	HPP EMTF-2 YR 16*	ASPR HPP YR 15**	ASPR EBOLA YR 2***	HPP TOTAL
Revenue							
State of TX - DSHS	\$17,210	\$17,210	\$379,825	\$13,340	\$3,103,990	\$408,978	\$3,940,553
Membership Dues	\$0	\$0	\$0	\$0	\$0	\$0	\$0
Professional Development Programs	\$0	\$0	\$0	\$0	\$0	\$0	\$0
Interest on Investments	\$0	\$0	\$0	\$0	\$0	\$0	\$0
Sponsorships	\$0	\$0	\$0	\$0	\$0	\$0	\$0
Golf Tournament	\$0	\$0	\$0	\$0	\$0	\$0	\$0
Total Revenue	\$17,210	\$17,210	\$379,825	\$13,340	\$3,103,990	\$408,978	\$3,940,553
Expenditures							
Salaries	\$0	\$0	\$58,486	\$5,421	\$762,991	\$81,351	\$908,249
Fringe Benefits	\$0	\$0	\$18,375	\$100	\$179,034	\$16,154	\$213,663
Travel	\$0	\$0	\$2,369	\$380	\$32,154	\$4,158	\$39,061
Equipment	\$0	\$0	\$44,548	\$0	\$0	\$0	\$44,548
Supplies	\$4,171	\$4,171	\$2,556	\$0	\$140,624	\$58,980	\$210,503
Contractual	\$0	\$0	\$0	\$0	\$890,963	\$139,148	\$1,030,111
Other	\$0	\$221	\$54,033	\$1,161	\$750,010	\$65,928	\$871,353
Indirect	\$0	\$0	\$35,383	\$3,745	\$348,214	\$43,259	\$430,602
Unobligated	\$0	\$0	\$0	\$0	\$0	\$0	\$0
Total Expenditures	\$4,171	\$4,392	\$215,750	\$10,808	\$3,103,990	\$408,978	\$3,748,089
Revenues Over (Under) Expenditures	\$13,039	\$12,818	\$164,075	\$2,532	\$0	\$0	\$192,464
Beginning Unrestricted Net Assets	\$0	\$0	\$0	\$0	\$0	\$0	\$0
Ending Temp Restricted Net Assets	\$13,039	\$12,818	\$164,075	\$2,532	\$0	\$0	\$192,464
Ending Unrestricted Net Assets	\$0	\$0	\$0	\$0	\$0	\$0	\$0
Ending Net Assets	\$13,039	\$12,818	\$164,075	\$2,532	\$0	\$0	\$192,464

*HPP YR 16 began July 1, 2017 and runs through June 30, 2018

**HPP YR 15 began July 1, 2016 and runs through June 30, 2017

***EBOLA YR 2 began Aug 1, 2016 and runs through July 14, 2017

NCTTRAC: Prepare. Support. Respond.

Statement of Activities

July 31, 2017

	HPP/EBOLA SUMMARY	EMS/COUNTY ASSISTANCE	EMS/RAC	TOBACCO	CVD	UNRESTRICTED/ DEVELOPMENT	TOTAL
Revenue							
State of TX - DSHS	\$3,940,553	\$430,400	\$336,064	\$347,498	\$72,701	\$0	\$5,127,216
Membership Dues	\$0	\$0	\$0	\$0	\$0	\$462,420	\$462,420
Professional Development Programs	\$0	\$0	\$0	\$0	\$0	\$27,565	\$27,565
Interest on Investments	\$0	\$0	\$0	\$0	\$0	\$20,803	\$20,803
Sponsorships	\$0	\$0	\$0	\$0	\$0	\$400	\$400
Golf Tournament	\$0	\$0	\$0	\$0	\$0	\$9,600	\$9,600
Total Revenue	\$3,940,553	\$430,400	\$336,064	\$347,498	\$72,701	\$520,789	\$5,648,005
Expenditures							
Salaries	\$908,249	\$0	\$182,616	\$159,178	\$23,730	\$98,992	\$1,372,764
Fringe Benefits	\$213,663	\$0	\$46,782	\$34,519	\$5,594	\$22,528	\$323,087
Travel	\$39,061	\$0	\$0	\$0	\$574	\$13,334	\$52,970
Equipment	\$44,548	\$0	\$0	\$0	\$0	\$0	\$44,548
Supplies	\$210,503	\$0	\$0	\$0	\$0	\$0	\$210,503
Contractual	\$1,030,111	\$413,983	\$0	\$20,244	\$0	\$0	\$1,464,338
Other	\$871,353	\$0	\$66,787	\$27,670	\$64,677	\$156,157	\$1,186,644
Indirect	\$430,602	\$0	\$5,243	\$4,506	\$478	\$36,231	\$477,059
Unobligated	\$0	\$0	\$0	\$4,000	\$0	\$0	\$4,000
Total Expenditures	\$3,748,089	\$413,983	\$301,427	\$250,116	\$95,054	\$327,242	\$5,135,912
Revenues Over (Under) Expenditures	\$192,464	\$16,417	\$34,637	\$97,382	(\$22,353)	\$193,546	\$512,093
Beginning Unrestricted Net Assets	\$0	\$0	\$0	\$0	\$37,476	\$570,371	\$570,371
Ending Temp Restricted Net Assets	\$192,464	\$16,417	\$34,637	\$97,382	\$15,123	\$0	\$163,559
Ending Unrestricted Net Assets	\$0	\$0	\$0	\$0	\$0	\$763,917	\$763,917
Ending Net Assets	\$192,464	\$16,417	\$34,637	\$97,382	\$15,123	\$763,917	\$927,476

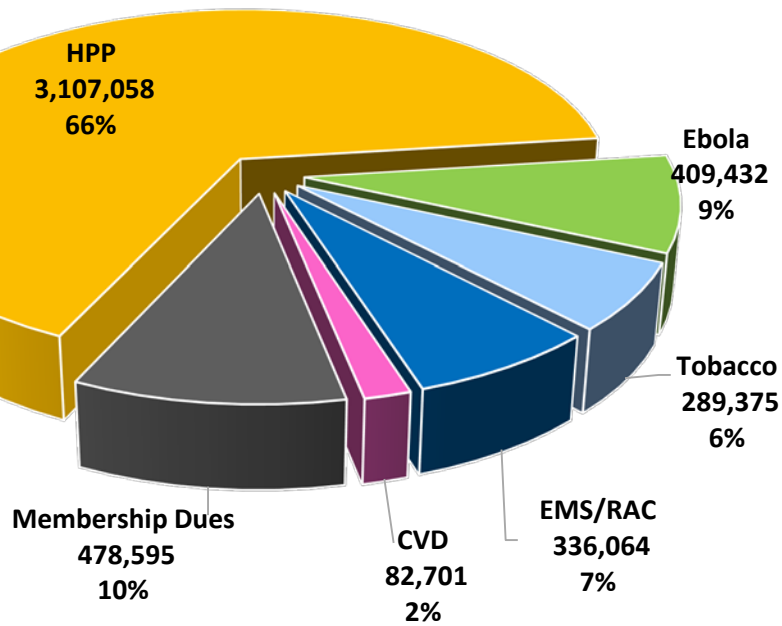
Balance Sheet

July 31, 2017

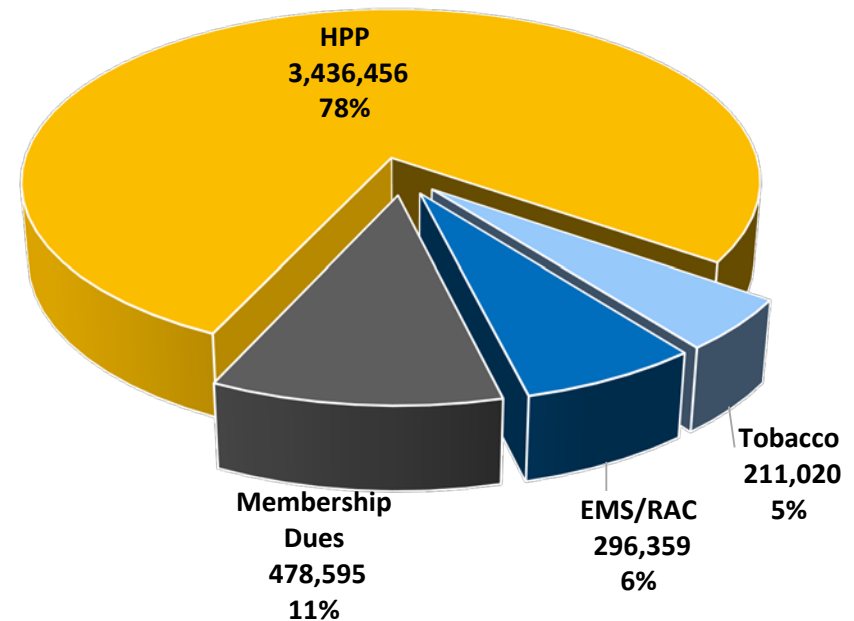
	2017	2016
ASSETS		
Current Assets		
Cash	\$1,982,624	\$1,813,647
Other Current Assets		
Accounts Receivable - DSHS		100,324
Accounts Receivable - Membership	544,245	513,505
Investments	339,044	118,256
Total Other Current Assets	883,289	732,086
Other Assets		
Security Deposits & Unapplied Cash	8,671	8,671
Prepaid Expense		16,371
Inventory Held for Distribution	3,319,399	3,447,114
Fixed Assets (net of depreciation)	1,186,828	1,828,222
TOTAL ASSETS	\$7,580,812	\$7,846,110
LIABILITIES & EQUITY		
LIABILITIES		
Current Liabilities		
Accounts Payable	\$542,594	\$311,910
Other Current Liabilities		
ASPR Interest Payable to State	75	68
Payroll Liabilities	76,191	114,604
Deferred Revenue	632,825	618,140
Total Other Current Liabilities	679,092	732,812
Total Liabilities	1,261,685	1,044,722
EQUITY		
Unrestricted Net Assets	763,917	585,325
Temporarily Restricted Net Assets	1,038,982	940,727
Temporarily Restricted Net Assets - Inventory	3,319,399	3,447,114
Temporarily Restricted - Fixed Assets	1,186,828	1,828,222
TOTAL LIABILITIES & EQUITY	\$7,580,812	\$7,846,110

FY 17/18 Revenue Comparison

FY 17 Budget



FY 18 Budget



* Pass Through Funds not included

FY18 Budget

Consolidated	HPP TSA-C	HPP TSA-D	HPP TSA-E	HPP EMTF-2	EMS COUNTY ASST	EMS TOB	EMS RAC	UNR	TOTAL
REVENUE									
State of TX DSHS	164,669	164,669	2,975,322	131,736	386,602	211,020	296,359		4,330,377
Membership Dues								478,595	478,595
Total Revenue	164,669	164,669	2,975,322	131,736	386,602	211,020	296,359	478,595	4,808,972
EXPENSES									
Salaries	57,000	57,000	751,341	67,199		105,880	131,580	109,500	1,279,500
Fringe Benefits	17,100	17,100	225,402	20,160		31,764	39,474	32,850	383,850
Travel	8,557	8,466	26,956	2,727		0	0	27,500	74,206
Equipment	0	0	118,500	0		0	0	0	118,500
Supplies	7,500	7,500	299,458	0		1,000	2,000	1,000	318,458
Contractual	22,381	22,472	284,456	0	386,602	0	0	0	715,911
Other Services & Charges	19,197	19,197	890,340	16,231		25,717	62,940	174,864	1,208,487
Indirect	32,934	32,934	378,869	25,419		41,659	60,364	69,977	642,156
Unobligated for Future Projects						5,000			5,000
Total Expenses	164,669	164,669	2,975,322	131,736	386,602	211,020	296,359	415,692	4,746,068
NET INCOME/LOSS	0	0	0	0	0	0	0	62,903	62,904

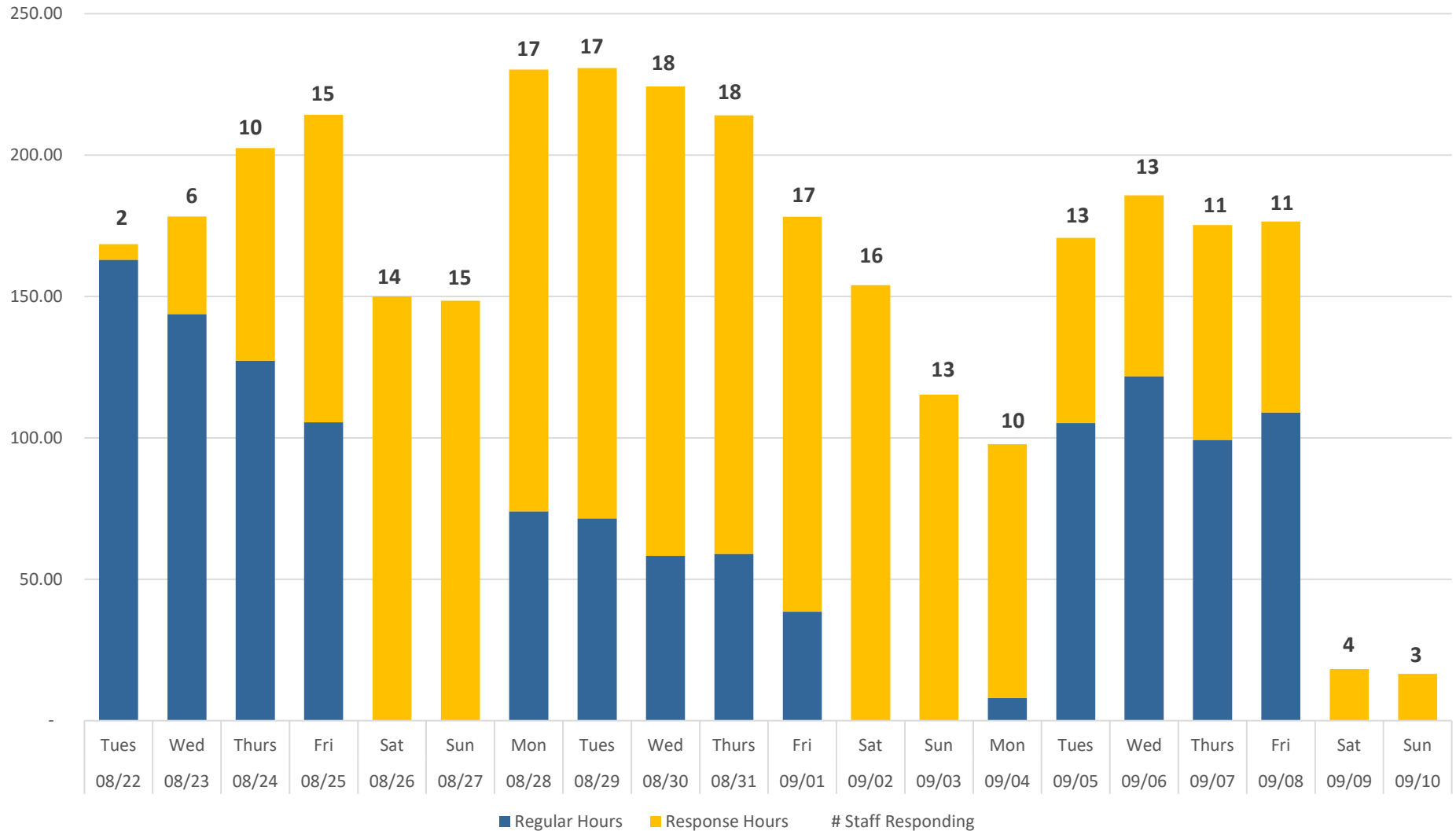
Direct FTE Supported	1.00	1.00	9.99	1.00	0.00	1.23	1.47	1.31	17.00
Indirect FTE Supported	0.29	0.29	2.94	0.29	0.00	0.36	0.43	0.39	5.00
Total FTE Supported	1.29	1.29	12.93	1.29	0.00	1.59	1.90	1.70	22.00

Emergency & Acute Healthcare Systems Reports

Hurricane Harvey Response

- **Emergency Medical Coordination Center (EMCC)**
 - **Activation: August 23rd - September ??, 2017**
 - **DDC Request for NCTTRAC Liaison (on-going)**
 - **Supporting State & Regional Medical Requests**
 - **4 Mass Fatality Trailers for Coastal Area Recovery**
 - **Burleson, Grayson County, NCTTRAC, Wichita Falls**
 - **Temp Beds for Shelters**
 - **Bariatric cots for Shelters**
 - **Regular & Bariatric wheelchairs for Shelters**
 - **Ancillary medical supplies for Shelters**
 - **Supporting EMTF Deployment & Demobization**

Harvey Response NCTTRAC Staff



■ Regular Hours ■ Response Hours # Staff Responding

NCTTRAC: Prepare. Support. Respond.

Emergency Medical Task Force – 2



EMTF-2 response to Hurricane Harvey:

- 4 AMBUSes
- 1 Task Force Leader
- 35 MMU Personnel
- 23 MIST Members
- 6.5 Ambulance Strike Teams
(33 Ambulances)
- 26 Ambulance Staging
Logistics Support Personnel



Total: 310 personnel / 62 agencies

Hospital Preparedness Program (HPP) Contract Update

- NCTTRAC renewed as DSHS HPP Awardee for 5-Yr Budget Period July, 2017 thru June, 2022
- New Letters of Agreement (LOAs) and Memoranda of Sharing (MOS) required for HPP participation
 - Received 140 agreements thus far:
 - TSA-C – 12 / TSA-D – 13 / TSA-E – 115
- Hazard Vulnerability Analysis (HVA) yielded 62 respondents from TSA-C, D, & E

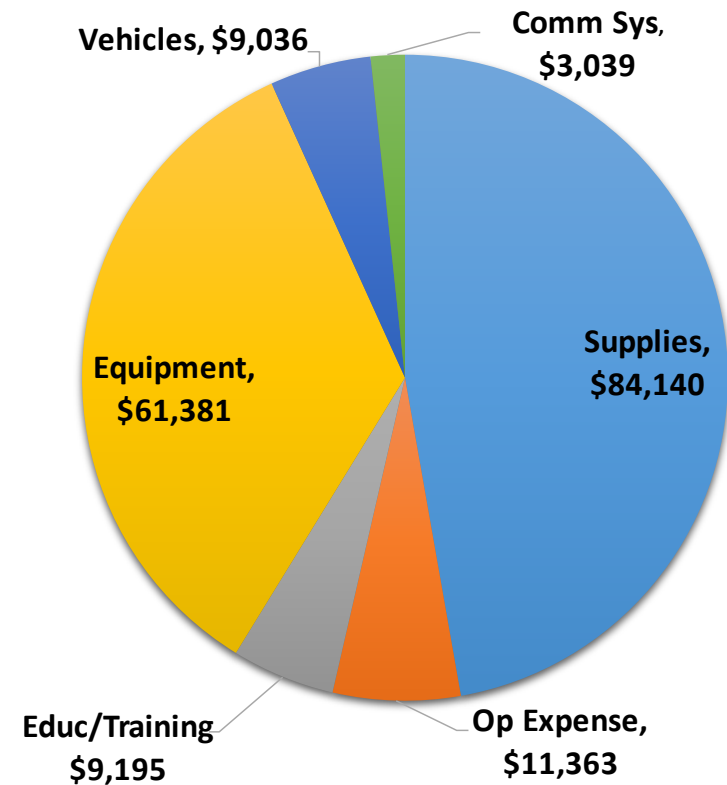
TSA-E Regional Hazard Vulnerability Analysis Results

- 1) Tornado
- 2) Severe Thunderstorm
- 3) Electrical Failure
- 4) Chemical Exposure, External
- 5) Small - Medium Size Internal Spill
- 6) Mass Casualty Incident, Trauma
- 7) Temperature Extremes
- 8) Information Systems Failure
- 9) Mass Casualty Incident, Medical / Infectious
- 10) Communications Failure

FY17 EMS County Assistance “Pass-Through” Utilization

Eligible Expenditures

- *Supplies*
- *Ops Expense*
- *Education & Training*
- *Equipment*
- *Vehicles*
- *Comm Equipment*



TSA-E Allotment: \$430,400
Total Number of Agencies: 77

YTD Reimbursement: \$430,400
YTD Number of Agencies: 77

• 2017 Local Projects Grant

–10 Grant Awardees

- Aubrey Area Ambulance
- Bonham Fire Department
- Corsicana Fire Department
- Erath County EMS
- Garland Fire Department
- Mansfield Fire Department
- Mineral Wells Fire/EMS
- Parker County EMS
- Preston Volunteer EMS
- Willow Park Fire Rescue



–**Total reimbursement: \$56,079.24**

Emergency & Acute Healthcare Systems (EAHS)

- **RAC Data Collaborative (RDC)**

- Hospital STEMI and Stroke registry
- No cost for TSA-E facilities usage



- **2017 Needs Assessment**

- Conducted in July with 138 total respondents
- Results Available at www.ncttrac.org

- **Data Analytics Update (ongoing initiatives)**

- Perinatal newborn first temperature
- EMS Stroke Scale survey
- EMS Medical Director contact survey
- STEMI survey
- Stroke survey



Emergency & Acute Healthcare Systems (EAHS)

Event	Date
Basic Designated Infection Control Officer Course	Apr-17
Bleeding Control (B-Con) Basic	May-17
Trauma Outcomes and Performance Improvement (TOPIC)	Jul-17
Trauma Nursing Core Course (TNCC) - Instructor Course	Jul-17
NCTTRAC Cardiac & Stroke Symposium	Jul-17
Stroke Certified RN (SCRN) Review Course	Aug-17
Basic Designated Infection Control Officer Course	Aug-17
Advanced Burn Life Support (ABLS)	Sep-17

Committee Reports

- Air Medical Committee
- Cardiac Committee
- Emergency Department Operations
- EMS Committee
- Medical Directors
- Pediatric Committee
- Perinatal WG
- Professional Development Committee
- Public Education / Injury Prevention Committee
- Regional Emergency Preparedness Committee
- Stroke Committee
- System Performance Improvement (SPI) Committee
- Trauma Committee

Air Medical Committee YTD 2017 Project Accomplishments

- SOP reviewed/updated, approved
- Aircraft Utilization and Systems Performance Review Guidelines finalized, reviewed by EMS, and being integrated into RAC Guidelines
- 2017 Goals defined
- Committee Medical Director elected- Dr. Scott Van Popple
- Completed SPI Data Tool & elected 2 committee personnel
- Helipad tab placed in EMResources, creating detailed communication
- Ground to Air Communication safety concerns presented at GETAC Disaster and Air Medical Committee meetings, establishing best practice recommendations

Air Medical Committee Upcoming Meetings

- Finalize Quality Indicators
- Annual Review of Air Medical Guidelines
- Develop Helipad Tab on EMResource Education Letter
- Elect new Co-Chair

Committee Reports

- ✓ Air Medical Committee
- Cardiac Committee
- Emergency Department Operations
- EMS Committee
- Medical Directors
- Pediatric Committee
- Perinatal WG
- Professional Development Committee
- Public Education / Injury Prevention Committee
- Regional Emergency Preparedness Committee
- Stroke Committee
- System Performance Improvement (SPI) Committee
- Trauma Committee

Governance and Meeting Information

- Chair: Kris Powell
- Chair-elect: Josh Constantino
- Medical Director: Ray Fowler
- Meets 1st Wed, 12:00–1:00 pm

Committee activities

➤ **Best practice for EMS Handoff report to ED staff**

- Recommended as a Best Practice by EMS and ED Ops Committees and NCTTRAC Board of Directors. Letter and resources emailed to NCTTRAC membership (2/2017).
- Need identified to re-educate and reinforce. Action plan to (1) survey hospitals regarding Timeout processes, (2) publish update in NCTTRAC Newsletter (article submitted), (3) provide tools for hospital audits.

➤ **GETAC Taskforce on FSEDs and ACCs**

- Final document titled *GETAC Non Traditional Emergency Care Facilities Destination Tool* sent out Jan 2017
- Submitted to NCTTRAC Medical Directors Committee for discussion regarding NCTTRAC response.

Committee activities (cont'd)

➤ **Regional and Hospital Surge planning and resources**

- EMResource review of expectations and functions. Monthly compliance reports being posted.
- Surge Toolkit reviewed and posted
- Consideration of collaborative workgroup with representation from ED Ops, EMS, Cardiac, Stroke, and Trauma to discuss EMResource policy and procedures.

➤ **Sexual Assault Care**

- Reviewed Health & Safety Code and new legislation regarding care of sexual assault patients in EDs
- Information posted on ED Ops website

➤ **Nominations for Chair-Elect in progress (10/2017, 2 yr term)**

Parking Lot issues

- Flow and care of special populations
 - Nursing home pts
 - Sepsis Care
 - Psychiatric care
- Interfacing with EMS and Community Paramedicine programs
- ED leader development and resources
- ED boarding and overcrowding
- Poison Center funding and support

Committee Reports

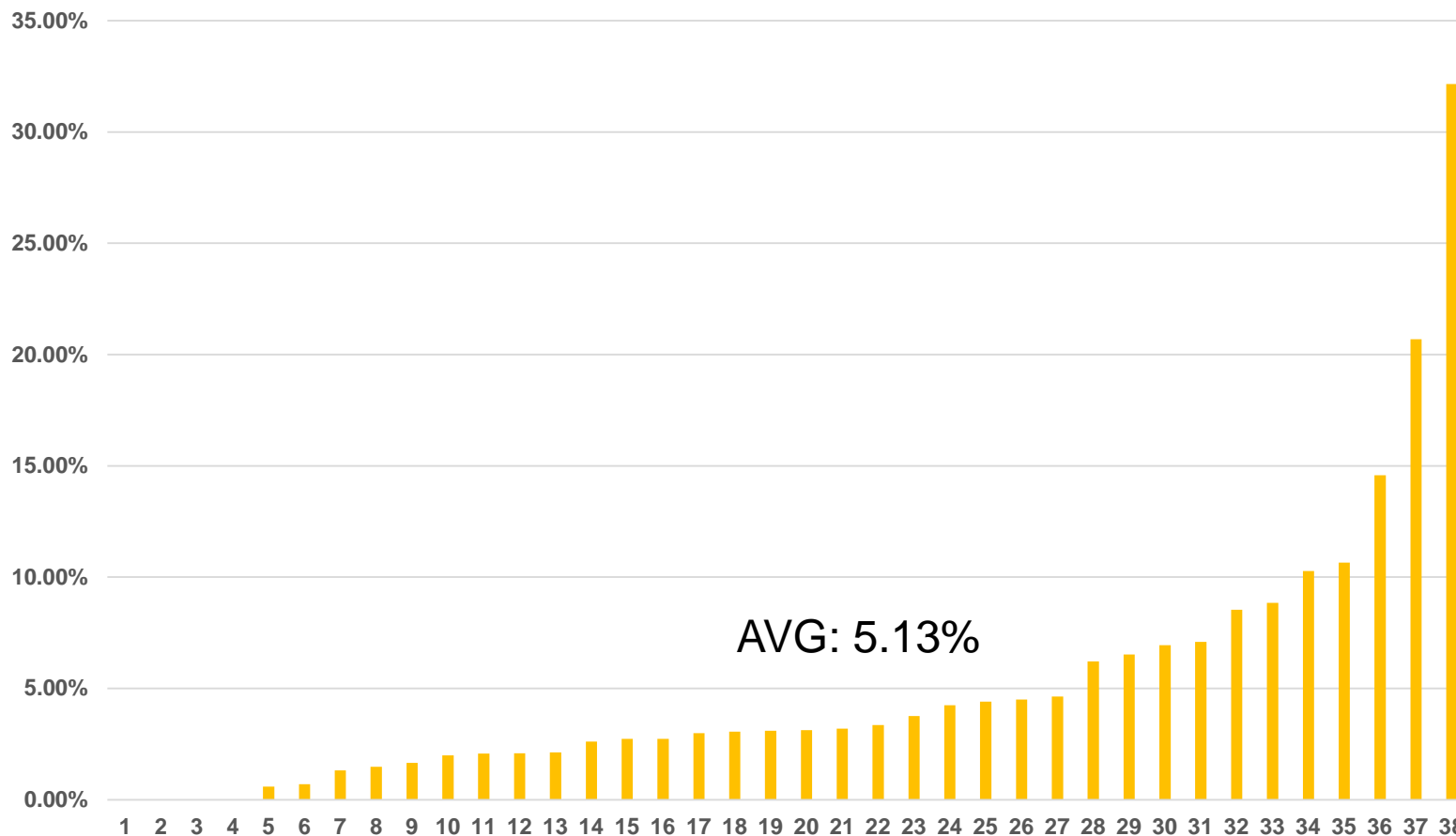
- ✓ Air Medical Committee
- ✓ Cardiac Committee
- ✓ Emergency Department Operations
- EMS Committee
- Medical Directors
- Pediatric Committee
- Perinatal WG
- Professional Development Committee
- Public Education / Injury Prevention Committee
- Regional Emergency Preparedness Committee
- Stroke Committee
- System Performance Improvement (SPI) Committee
- Trauma Committee

- Perinatal Smart Goal # 1
 - New Born First Temperature Pilot Study—rolling data collection by quarter. Started on Jan 1, 2017.
 - Multiple rounds of Data Collection.

Participation

- Data Date Range: January 1, 2017 – June 30, 2017
- 45 out 54 Perinatal facilities participated
- **5,748** total admissions into the NICU
- **30,628** total admissions into the Well Baby Nursery

Prevalence of Hyperthermia in Well Baby Nursery



Recent Activity

- Database Demonstration – Analytic Solutions Network (ASN)
- Budget for perinatal database was approved at NCTTRAC at last Board meeting and is committed to seeking out a database solution.
- Jeff Gould (Stanford), PI for CPQCC, to speak on data set and organization
- NCTTRAC to try and lead discussion on the PAC level regarding a single data solution for all RAC's in Texas

- Needs assessment being processed
- GETAC
 - Increased prehospital education both beginning and ongoing
- Ongoing needs from facility and prehospital providers for card courses
- NCTTRAC Education Calendar (web)
 - Please submit any courses to Melissa Christon to get the course published on the website

Committee Reports

- ✓ Air Medical Committee
- ✓ Cardiac Committee
- ✓ Emergency Department Operations
- ✓ EMS Committee
- ✓ Medical Directors
- ✓ Pediatric Committee
- ✓ Perinatal WG
- ✓ Professional Development Committee
- Public Education / Injury Prevention Committee
- Regional Emergency Preparedness Committee
- Stroke Committee
- System Performance Improvement (SPI) Committee
- Trauma Committee

- Stroke SOP reviewed, revised and approved
- Regional Stroke Plan
 - Task force re-engaged
 - Currently in the process of review/revision
 - Survey Monkey to be sent out by EMS Committee
 - Triage field screening tools & Medical Directors
- PI Task Force
 - Re-engaged; Met on 08/02/17
 - Working on committee objectives and data point
 - To be approved by stroke committee at next meeting scheduled for 10/04/17

- Chair Elect Nominated and ratified
 - Dr. Robin Novakovic, MD, FSVIN
Associate Professor, Neuroradiology Division
UT Southwestern Medical Center
 - Board Certified: Neurology, NeuroEndovascular
Surgery, Neurocritical Care and Vascular Neurology
Treasurer, Society of Vascular & Interventional
Neurology (SVIN)

Committee Reports

- ✓ Air Medical Committee
- ✓ Cardiac Committee
- ✓ Emergency Department Operations
- ✓ EMS Committee
- ✓ Medical Directors
- ✓ Pediatric Committee
- ✓ Perinatal WG
- ✓ Professional Development Committee
- ✓ Public Education / Injury Prevention Committee
- ✓ Regional Emergency Preparedness Committee
- ✓ Stroke Committee
- System Performance Improvement (SPI) Committee
- Trauma Committee

Board of Directors Zones Rep – Bobby Sewell

<i>Zone 1</i>	VACANT	
<i>Zone 2</i>	Lisa Ponce	Air-Evac LifeTeam 68
<i>Zone 3</i>	Kathy Humphrey	Air-Evac LifeTeam
<i>Zone 4</i>	Thomas Pritchett	Kerens VFD
<i>Zone 5</i>	Margo Shoemaker	Centennial MC
<i>Zone 6</i>	Martha Headrick	Air-Evac LifeTeam 69
<i>Zone 7</i>	Bobby Sewell	Bedford FD
<i>Zone 8</i>	LuAnn McKee	BioTel/Parkland
	Stephen Bock	Medical City Dallas

General Public Comment

- Next **Board of Directors** Meeting – 10:30 AM, Tuesday, **October 10, 2017** at the NCTTTRAC Offices, 600 Six Flags Drive, Arlington
- Next **General Membership** Meeting – 1:30 PM, Tuesday, **March TBD, 2018** at a location **TBD**
(watch for an announcement!)
- Call to Adjourn