



OnTRAC Newsletter Spring 2018

PREPARE. SUPPORT. RESPOND.

IN THIS ISSUE

Emergency Medical Task Force – 2 (EMTF – 2)

On March 25, EMTF-2 supported the Bataan Memorial Death March by providing medical assets and providing patient care for 500 hundred race participants. This marathon event takes place annually in New Mexico at the White Sands Missile Range. Each EMTF region from across the state sends teams to provide the main medical capability. This year EMTF-2 was able to send a logistics team and a clinical team comprised of nurses, paramedics and Medical Director, Dr. Sharon Malone. Thank you to Medical



City Healthcare and Baylor Scott & White Health for supporting this very special event.



During the week of April 16-19, EMTF-2 conducted a regional AMBUS Drivers Course for each of our AMBUS Host Agencies (Frisco FD, Flower Mound FD, Cedar Hill FD and MedStar / Ft. Worth). Each AMBUS Host Agency sent five drivers to receive education on advanced backing and close quarter maneuvering. These training and education opportunities advance the AMBUS program and offer unique experiences. Thank you to Ft Worth FD who graciously provided a location for the event at the Bob Bolen Training Complex.



Healthcare Organizations
Shelter In-Place Planning

Logistics now has its own webpage at the NCTTRAC website.

Check it out at:

<https://ncttrac.org/programs/emergency-healthcare-services-ehs/logistics/>



Training and Exercise: Stay connected by subscribing to the Training-Exercise Listserv.

Phone Numbers

Office (M-F, 8-5)

(817) 608-0390

Fax:

(817) 608-0399

Warehouse

(817) 608-0390 ext. 7100

In Case of an Emergency (24 hr), TSA-E

Medical Coordination Center (EMCC)

(817) 607-7020

Trauma Transport Line

(888) 799-8722

FOR MORE INFORMATION ON JOINING EMTF - 2

Please visit www.ncttrac.org

Or contact Thomas Stidham

Phone: 817-607-7015 / Email: tstidham@ncttrac.org



Training and Exercise

TSA-E Health Care Coalition completed its first Coalition Surge Test (CST) on March 26, 2018! The Coalition Surge Test is an annual exercise requirement for the Hospital Preparedness Program (HPP). It is a Low/No-Notice, peer assessment, tabletop exercise which helps coalition identify gaps in surge planning. The exercise events included: activation of the EMCC, the EMResource Bed Reporting Drill, phone calls to the Evacuating and Receiving facilities to determine extend of play, monitoring WebEOS, and facilitating the CST discussion. At the conclusion of the simulated 90 minute exercise, 139 patients of 321 licenses beds were evacuated.

Many thanks to the 20 facilities and agencies that participated in NCTTRAC Coalition Surge Test which included:

ESF-8 Agencies:

- Dallas County Health and Human Services
- Texas Department of State Health Services
- Public Health Region 2/3

Peer Assessors/Evaluators:

- Medical City Alliance
- Texas Health Resources

Evacuating Facilities:

- Hunt Regional Medical Center
- iCare Rehabilitation Hospital
- Wise Health System

Transportation Agencies:

- Benbrook Fire Department
- Texas EMS

Receiving Facilities:

- Baylor Medical Center at Uptown
- Crescent Medical Center Lancaster
- HealthSouth City View Rehabilitation Hospital
- Medical City Las Colinas
- Medical City Plano
- Medical City Frisco
- Navarro Regional Hospital
- Texoma Medical Center
- USMD Hospital at Arlington
- Vibra Specialty Hospital
- Vibra Hospital of Richardson

NCTTRAC
NORTH CENTRAL TEXAS
TRAUMA REGIONAL ADVISORY COUNCIL

TSA-E Coalition Surge Test
March 26, 2018

Phase 1: 90 Minute Notional Evacuation of 3 Healthcare Organizations

- Wise Health System
- Hunt Regional Medical Center
- iCare Acute Rehabilitation Hospital

Phase 2: Facilitated Discussion

- NCTTRAC
- Healthcare Facilities (Evacuating & Receiving)
- EMS/Patient Transport
- Public Health
- Additional partners

Participation

49	3	12	3
Hospital Bed Reports	Evacuating Facilities	Receiving Facilities	Transportation Mechanisms

Lessons Learned!

- Patient Tracking
- GIS Mapping
- Continuity of Operations
- Contact Management



By subscribing to the [Training-Exercises Listserv](#) you will receive notifications for future trainings. You may also visit the NCTTRAC website and view the education calendar.

[NCTTRAC CMS Preparedness Updates](#)

The CMS page on the [NCTTRAC](#) website has been updated. There you can receive high-level information on the CMS preparedness rule and

access resources including the [CMS Surveyors Training](#), a list of [CMS Provider Types](#), and the [CMS Guidelines for Healthcare Agency Emergency Preparedness](#) LMS course. Upon completion of the course, students will have access to templates and resources by provider type on the LMS dashboard.

On March 20, 2018, NCTTRAC hosted the CMS Preparedness Workshop. There were twenty five attendees from six different CMS provider types. Topics included Emergency Operations Planning, Communication Planning, and Training and Exercise education. A special thank you to our HCC members J.J. Jones and Jason Quick for serving as presenters during the workshop. The workshop documents can be found on the [NCTTRAC](#) CMS webpage under the CMS Preparedness Workshop tab.



LOGISTICS

The Logistics Section has been conducting facility/site visits throughout the region and assisted emergency managers with their HPP inventory accountability:

- Visited Collin and Navarro counties and conducted Mobil Medical Units (MMU) inspections, assessments, and recommendations.
- Conducted facility visits to 9 hospitals and provided assistance with inventory control and disposition of expired/damaged supplies processes.
- Received Collin County's Mobile Medical Unit (MMU) which is scheduled to be reinventoried and potentially repurposed as a mobile medical shelter supply cache.
- Conducted a NCTTRAC capabilities briefing and warehouse orientation to Collin County's Medical Examiner and supporting staff.



Additionally, and as part of the procurement role, the Logistics Section researched, prepared and submitted over \$230,000 in purchase orders in support of the regional spend down process.

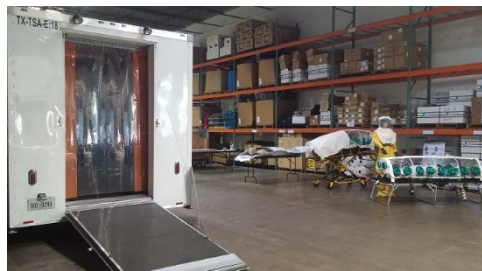
The Logistics Section now has its own page on the NCTTRAC website. Once logged in, you can find forms and documents which will help regional partners with GC-11 submission, property disposition and regional inventory availability during unscheduled events and/or emergencies.

Check out the new Logistics website using this address:
<https://ncttrac.org/programs/emergency-healthcare-services-ehs/logistics/>

WAREHOUSE

**4408 Barnett Blvd.
Arlington, TX 76017**

CONTACTS
Victor Reyes & Jeff Tice
(817) 608-0390 ext. 7100
logistics@ncttrac.org



NCTTRAC Mobil Emergency Response Communications (MERC) Trailer

Trailer Finds a New Home

After an arduous and competitive process the NCTTRAC Mobil Emergency Response Trailer was awarded to

Parker County Hospital District / LifeCare EMS. This asset is valued at over \$150,000 and was originally purchased with Hospital Preparedness funds in 2013.



The MERC is a comprehensive mobile Command / Communication system designed to supplement or replace communication systems when needed. The MERC includes satellite telephone/internet connectivity, a cell phone booster system, VHF and UHF public safety radio repeaters, UHF/VHF/700-800 public safety radios, UHF/VHF/HF Ham radio, security camera system, and DirecTV satellite system.

The North Texas Region currently hosts two MERCs, the other resides with Medical City Healthcare and is housed in Denton County. These assets and others can be found on the Logistics webpage at www.NCTTRAC.org and may be requested through the NCTTRAC 24/7 Duty Phone at (817) 607-7020

Healthcare Organizations Shelter In-Place Planning

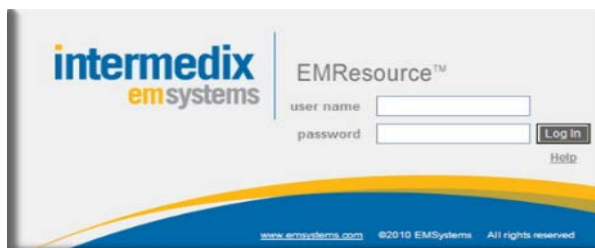
The decision to shelter-in-place is based on the nature and timing of an emergency (e.g., tornado, flooding, active shooter, or improvised nuclear device detonation), the potential effects on patient care deliver, and the status of critical infrastructure in the surrounding community. Health care organizations should consider the following when developing their shelter-in-place plans:



- Decision-making criteria and authorities
- Identification of patient and non-patient care locations to provide protection from the external environment
- Operational procedures for shutting down HVAC, lock-down, and access control
- Assessment of internal capabilities and needs
- Acquisition of supplies, equipment, pharmaceuticals, and other necessary resources for sustainment (e.g., water, food), as well as materials that may be important for children and others during extended sheltering (e.g., books and games)
- Internal and external communications plans, including plans for communicating with patients' and workforce's families
- Triggers for lifting shelter-in-place orders

Emergency Medical Coordination Center (EMCC)

The EMResource Workgroup is working to improve NCTTRAC's EMResource organization, utilization, and system data confidence. The group met on April 10th to analyze the results of the Initial User Survey and to develop a User Preference Survey that will collect important user information that will drive process management.



The group will reconvene on May 8th at 1:00pm at the NCTTRAC Offices. Representatives from each NCTTRAC Committees are encouraged to attend.

FOR MORE INFORMATION ON THE EMRESOURCE WORKGROUP

Please visit www.ncttrac.org
Or contact Jacob Seil
Phone: 817-607-7010 / Email: jseil@ncttrac.org

Regional Emergency Preparedness Committee

The Regional Emergency Preparedness Committee (REPC) recently updated their Standard Operating Procedures (SOP).

The main changes/additions were:

- Expansion of Core Group from 31 to 49
- Addition of Detailed Voter Eligibility
- Addition of Procurement Planning
- Addition of HCC Planning Workgroup

The expansion of the core group included the 16 CMS provided types, academic medical centers, medical societies, stand-alone EDs, and an at-large metro and non-metropolitan hospital.

The REPC also had a meeting to prioritize asset requests that were sent in from coalition partners and committees. The prioritization meeting was held on April 25th. The asset requests totaled more than one million dollars. The recommendation from that group was to fund the majority of the assets that were presented. That recommendation will move forward to REPC, then onto NCTTRAC's Finance Committee and Board of Director's Approval.



Cardiac Committee

Submitted by: Karen Yates, BSN, RN, CEN, LP,
Cardiac Committee Chair



The Cardiac Committee has been very busy this year. We have established an Education Task Force. They meet on a regular basis and have established a series of short 30 minutes educational offerings prior to some of our committee meetings. The next presentation will be August 1st at 8:30am. The topic will be **Effective Presentations**

by Erika Anderson. The task force is also working on a Cardiac Quality Improvement seminar to be held on February 7, 2019. This seminar will emphasize the collaboration between EMS and Cardiac Receiving facilities to provide the highest quality of patient care.

For more information about the Heart Safe Community Program Please visit www.ncttrac.org under the Cardiac Committee tab

Public Service

Members of the Cardiac Committee volunteered at the Texas Motor Speedway on March 31st. They taught hands only CPR and provided information on heart health. Thank you for going out of your way to educate the NSCAR crowd!

Get Involved

The Cardiac Committee needs the support and participation of our EMS and hospital partners. We meet the **first Wednesday of each month at 9:00am**. This meeting is followed by the stroke committee at 10:00am and the EMS committee at 11:00am. We hope to see you there!

Recognition

The Heart Safe Community Workgroup has also been busy reviewing applications and awarding recognition. Since the inception the following communities have been recognized:

City of Highland Village	City of Cedar Hill
City of Grand Prairie	City of Granbury
City of Weatherford	City of Hutchins
City of Bedford	City of Decatur
City of Arlington	City of Plano
City of Mansfield	

Healthcare Organizations Continuity of Operations (COOP)

COOP planning ensures the ability to continue essential business operations, patient care services, and ancillary support functions across a wide range of potential emergencies. A health care organization's COOP plan may be an annex to the organization's Emergency Operations Plan (EOP) and during a response should be addressed under the incident command system (ICS).

Regardless of the format, the COOP plan should include the following

- Activation and response functions
- Supervision and managerial points of contact for each department
- Orders of succession and delegations of authority
- Immediate actions and assessments to be performed in case of disruptions
- Safety assessments and resource inventory to determine whether the health care organization can continue to operate
- Redundant, replacement, or supplemental resources
- Strategies and priorities for addressing disruptions

Multiple employees from each HCC member organization should understand and have access to the HCC's information sharing platforms to ensure the continuity of information flow and coordination activities.



2018 NCTTRAC Golf Tournament

We are tremendously grateful to everyone who sponsored, participated in and contributed to the 3rd NCTTRAC Scramble Golf Tournament on Friday, March 30th. What started out as a chilly morning ended with beautiful weather, making it a perfect day to be out on the green!



A few shots from the green at the 2018 NCTTRAC Golf Tournament

Planning efforts for the FY19 NCTTRAC Golf Tournament will begin soon.

If you are interested in joining the FY19 NCTTRAC Golf Tournament Development Team, contact Crystal Kellan at ckellan@ncttrac.org!



A special **THANKS** to our Sponsors!



Congratulations to the 2018 NCTTRAC Golf Tournament Winning Teams!



NCTTRAC Membership Information

NCTTRAC Membership continues to grow in the 3rd quarter for the fiscal year.

Total NCTTRAC Members April 10, 2018	
EMS-Air	5
EMS-Ground	85
First Responder Organizations	13
Hospitals	99
Physician's Groups	1
Professional Organizations	1
Schools & Colleges	3
Total	207

NCTTRAC Members benefit from a regional, multidisciplinary perspective, which makes each member's area of practice stronger! You will have access to Subject Matter Experts for DSHS activities related to EMS/Trauma/Acute Care and the workings of the emergency & acute healthcare systems.

The NCTTRAC Healthcare Coalition and Emergency & Acute Healthcare System Departments are available to answer questions regarding EMS Licensure for First Responders and EMS providers as well as trauma, stroke, cardiac, and neonatal designation for hospitals.



The FY19 NCTTRAC Membership year will begin September 1st. Renewal information will be emailed and mailed in July to the attention of each members **Primary Voting Representative** and **Authorized Signature**. Make sure your organization's information is up to date!

Please visit our website at www.ncttrac.org to review your organization's current membership status, including participation credits. If you have any questions, please contact Crystal Kellan at ckellan@ncttrac.org or by phone at 817-607-7009.

Upcoming NCTTRAC Sponsorship Opportunities

Super Wednesdays

- Super Wednesday is the first Wednesday of each month. This is the meeting date for the majority of our Committees. Sponsorship for a committee meeting is a minimum of \$500 (per meeting). Food, Handouts, and promotional giveaway items are always welcome (with prior approval) in addition to the Sponsorship contribution.
- Super Wednesday Committee Meetings consist of Cardiac, Stroke, EMS (Ground), Emergency Department Operations, EMS (Air), Public Education & Injury Prevention, Pediatric, Professional Development, and Trauma Committees

General Membership

- NCTTRAC hosts, at a minimum, two General Membership meetings a year. The next NCTTRAC General Membership meeting will be held in September 2018. Sponsorship for the General Membership meeting is a minimum of \$1,000. As a sponsor, you will be provided a display table, your organization will be mentioned in the meeting, and information about your organization will be included in the OnTrac Quarterly Newsletter.

FY19 NCTTRAC Golf Tournament

- The FY19 NCTTRAC Golf Tournament will be held in March 2019. Sponsorship packages start as low as \$300! The Golf Tournament is a great way to meet and talk with regional EMS and Hospital members in a fun and casual setting

If you are interested in sponsoring a NCTTRAC Meeting or Event, please contact Crystal Kellan at ckellan@ncttrac.org or by phone at 817-607-7009.